

## Legal Responsibility for the Division of Prevention and Early Intervention

**Federal: Title XX, Social Security Act**

**Federal: Title IV-B, Part 2, Social Security Act**

**State: Texas Family Code, 264.301 also Chapter 265  
– created through SB1574 below**

**State: Senate Bill 1574, 76th Legislature**

**State: Human Resources Code, 40.0561**

**The Division of Prevention and Early Intervention (PEI)** was created to consolidate prevention and early intervention programs within the jurisdiction of a single state agency. Consolidation of these programs is intended to eliminate fragmentation and duplication of contracted prevention and early intervention services for at-risk children, youth, and families. Competitive procurements were held during FY2008 for the Statewide Youth Services Network (SYSN), which provides community and evidence-based juvenile delinquency prevention programs in each DFPS region; and the Community Based Family Services (CBFS) program, serving families who have been investigated by Child Protective Services but where the allegations were unsubstantiated. SYSN began providing services during FY2008 and CBFS will begin services in FY2009.

- **Community-Based Child Abuse Prevention (CBCAP)** – CBCAP seeks to increase community awareness of existing prevention services, strengthen community and parental involvement in child abuse prevention efforts, and encourage families to engage in services that are already available. In addition, CBCAP funds support the Rural Family Services program and replication of the Relief Nursery in two communities.
- **Community Youth Development (CYD)**  
This program assists communities in designing comprehensive approaches to support families and enhance the positive development of youth. Using legislative appropriations, grants are made available for developing juvenile delinquency prevention approaches in communities with high incidences of juvenile crime. Fifteen communities are being served.
- **Family Strengthening** – These services have been evaluated and proven to effectively increase family protective factors. A variety of services designed to increase family resiliency while preventing child abuse and neglect are available across the state.
- **Services To At-Risk Youth (STAR)** These services are offered to youths under the age of 18 who are runaway and/or truant, living in

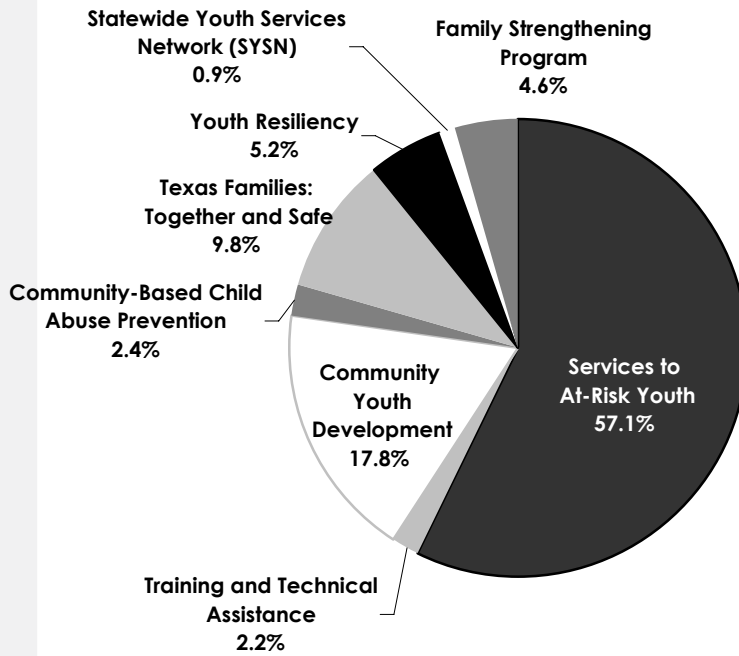
family conflict, have allegedly been involved in, or committed delinquent offenses, or have allegedly committed misdemeanor or state felony offenses but have not been adjudicated delinquent by a court. Contracted community agencies offer family crisis intervention, short-term emergency residential care, individual and family counseling, and other support services. In addition, universal child abuse prevention services are provided within the community.

- **Texas Families: Together and Safe** - Grants are allocated for family support services to community based prevention programs. The services are designed to alleviate stress and promote parental competencies and behaviors that will increase the ability of families to successfully nurture their children; enable families to use other resources and opportunities available in the community; and create support networks that enhance child-rearing abilities of parents.
- **Texas Youth and Runaway Hotlines** – Hotline staff and volunteers work closely with social service agencies and juvenile delinquency prevention programs. Their goal is to provide callers with 24-hour crisis intervention and telephone counseling; information and referral for callers in need of food, shelter and/or transportation home; conference calls to parents and shelters; and a confidential message relay service between runaways and parents.
- **Youth Resiliency** - These services have been evaluated and proven to effectively increase youth protective factors. A variety of services designed to increase youth resiliency while preventing juvenile delinquency are available across the state.
- **Tertiary Child Abuse Prevention** This program provides services to families who no longer require the support of Child Protective Services. The program seeks to prevent recurrences of child maltreatment by strengthening families. The program was reprocured during FY2008 with services to be implemented in FY2009.

**Prevention and Early Intervention - Expenditures and Staffing as of 1/7/2009**

Staff Cost	\$2,516,302.03
Total Staff	29.4
Contracted Services	\$39,656,956.18

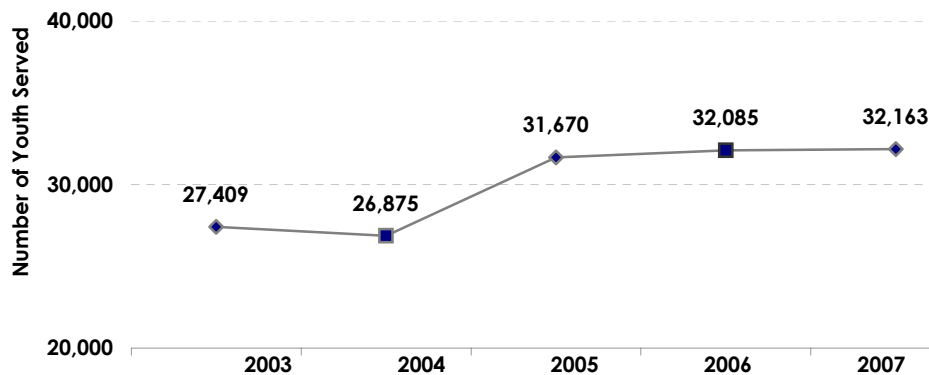
PEI Programs	FY 2008 Expenditures
Services to At-Risk Youth	\$19,926,886.82
Community Youth Development	\$6,210,204.83
Texas Families: Together and Safe	\$3,418,209.11
Youth Resiliency	\$1,828,440.49
Family Strengthening Program	\$1,598,283.75
Community-Based Child Abuse Prevention	\$836,492.99
Training and Technical Assistance	\$761,378.74
Statewide Youth Services Network (SYSN)	\$310,497.02
<b>Total</b>	<b>\$34,890,393.75</b>



### STAR (Services To At-Risk) Youth Who are Registered and Received a Service by Fiscal Year

The Services to At-Risk Youth (STAR) program was developed to assist local communication in serving youth who often fall between the cracks of the service delivery system. Their problems are not severe enough to receive services from traditional systems such as Child Protective Services or Juvenile Probation. The STAR program has established contacts with local agencies throughout the state that make crisis intervention, emergency short-term residential care and counseling available to at-risk youth and their families. The STAR program serves all 254 Texas counties.

Fiscal Year	Number of Youth
2004	27,409
2005	26,875
2006	31,670
2007	32,085
2008	32,163



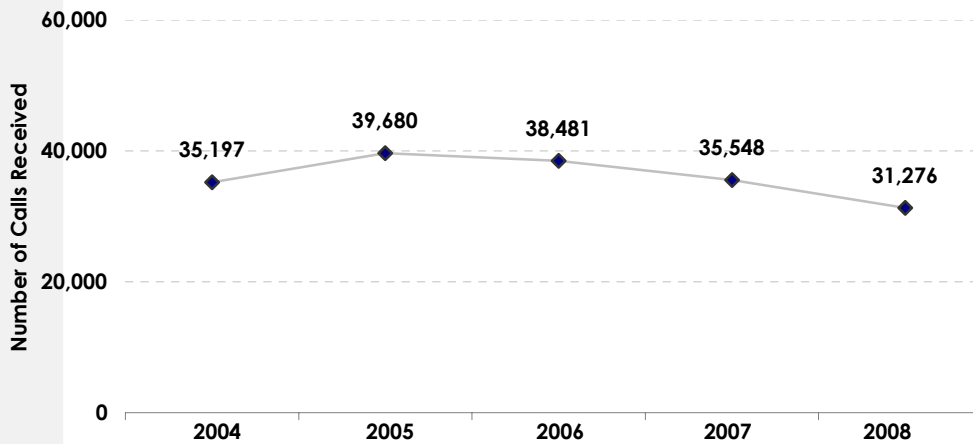
### Community Youth Development (CYD) Average Monthly Clients Served Fiscal Year 2008

County	City	Zip Code of Site	Average Unduplicated Youth Served per Month
Potter	Amarillo	79107	258
Travis	Austin	78744	355
Cameron	Brownsville	78520	317
Nueces	Corpus Christi	78415	456
Dallas	Dallas	75216	137
Dallas	Dallas	75217	105
El Paso	El Paso	79924	579
Tarrant	Fort Worth	76106	275
Galveston	Galveston	77550	285
Harris	Houston	77081	264
Lubbock	Lubbock	79415	206
Hidalgo	McAllen	78501	285
Harris	Pasadena	77506	445
Bexar	San Antonio	78207	173
McLennan	Waco	76707	423
<b>Average</b>			<b>4,563</b>

*Note All averages rounded to the nearest whole number.*

### Runaway Hotline Incoming Calls by Fiscal Year

Fiscal Year	Number of Calls
2004	35,197
2005	39,680
2006	38,481
2007	35,548
2008	31,276



### Characteristics of Hotline Callers Fiscal Year 2008

Gender	Total	Percentage
Female	23,144	74.0%
Male	8,132	26.0%
<b>Total</b>	<b>31,276</b>	

Age Group	Total	Percentage
Adult	22,831	73%
Youth	8,445	27%
<b>Total</b>	<b>31,276</b>	

**Number of Families (Primary Caregivers) Served in the  
Child Abuse/Neglect Prevention Programs  
Fiscal Year 2008  
Total Families Served: 4,979**

Unduplicated Families Served		
Program	Total	%
Community-Based Child Abuse Prevention (CBCAP)	506	10.2%
Texas Families: Together and Safe (TFTS)	3,136	63.0%
Family Strengthening Program (FSP)	1,337	26.9%
<b>Total</b>	<b>4,979</b>	<b>100.0%</b>

Primary Caregivers					
Ethnicity	CBCAP	TFTS	FSP	Total	%
African American	26	536	268	830	16.7%
Anglo	56	831	126	1,013	20.3%
Asian	1	11	1	13	0.3%
Hispanic	417	1,715	932	3,064	61.5%
Native American	0	26	3	29	0.6%
Other	6	17	7	30	0.6%
<b>Total</b>	<b>506</b>	<b>3,136</b>	<b>1,337</b>	<b>4,979</b>	<b>100.0%</b>

Primary Caregivers					
Gender	CBCAP	TFTS	FSP	Total	%
Female	478	2,807	1,250	4,535	91.1%
Male	28	329	87	444	8.9%
<b>Total</b>	<b>506</b>	<b>3,136</b>	<b>1,337</b>	<b>4,979</b>	<b>100.0%</b>

Primary Caregivers					
Age Group	CBCAP	TFTS	FSP	Total	%
Under 18	21	1,039	370	1,430	28.7%
18-25	113	1,162	380	1,655	33.2%
26-35	225	611	153	989	19.9%
36-45	111	213	56	380	7.6%
Over 45	36	111	378	525	10.5%
<b>Total</b>	<b>506</b>	<b>3,136</b>	<b>1,337</b>	<b>4,979</b>	<b>100.0%</b>

*Note: In 194 of the 4,979 families served, the primary caregiver did not receive a service during the reporting period.*

**Number of Youth Served in the Juvenile Delinquency Prevention Programs  
Fiscal Year 2008  
Total Youth Served: 53,387**

Unduplicated Youth Served		
Program	Total	%
Services to At Risk Youth (STAR)	32,163	60.2%
Community Youth Development (CYD)	18,074	33.9%
Statewide Youth Services Network (SYSN)	1,530	2.9%
Youth Resiliency Program (YRP)	1,620	3.0%
<b>Total</b>	<b>53,387</b>	<b>100.0%</b>

Race/Ethnicity	STAR	CYD	SYSN	YRP	Total	%
African American	5,536	3,363	618	528	10,045	18.8%
Anglo	10,597	685	250	367	11,899	22.3%
Asian	140	102	3	7	252	0.5%
Hispanic	15,383	13,710	608	697	30,398	56.9%
Native American	97	76	5	6	184	0.3%
Other	410	138	46	15	609	1.1%
<b>Total</b>	<b>32,163</b>	<b>18,074</b>	<b>1,530</b>	<b>1,620</b>	<b>53,387</b>	<b>100.0%</b>

Gender	STAR	CYD	SYSN	YRP	Total	%
Female	14,325	9,420	760	740	25,245	47.3%
Male	17,838	8,652	769	879	28,138	52.7%
Unknown	0	2	1	1	4	0.0%
<b>Total</b>	<b>32,163</b>	<b>18,074</b>	<b>1,530</b>	<b>1,620</b>	<b>53,387</b>	<b>100.0%</b>

Age Group	STAR	CYD	SYSN	YRP	Total	%
Under 6	2,396	104	3	2	2,505	4.7%
6-9	5,141	2,703	7	64	7,915	14.8%
10-17	24,589	14,935	1,520	1,545	42,589	79.8%
Over 17	37	332	0	9	378	0.7%
<b>Total</b>	<b>32,163</b>	<b>18,074</b>	<b>1,530</b>	<b>1,620</b>	<b>53,387</b>	<b>100.0%</b>