



Texas Department of
Family and Protective Services

Faith-Based and Community Engagement

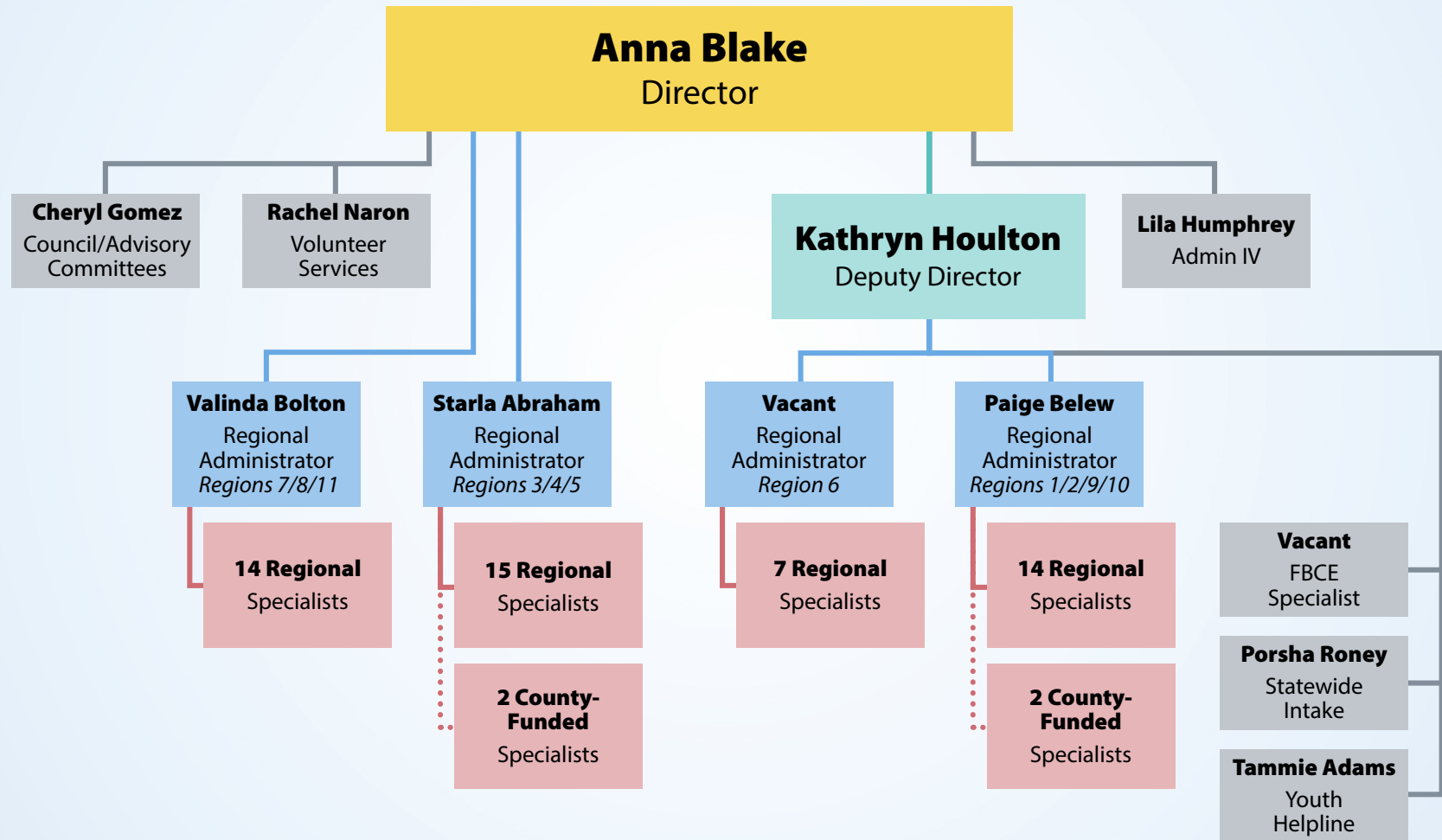


Texas Department of
Family and Protective Services

Anna Blake

Director of Faith-Based
and Community Engagement

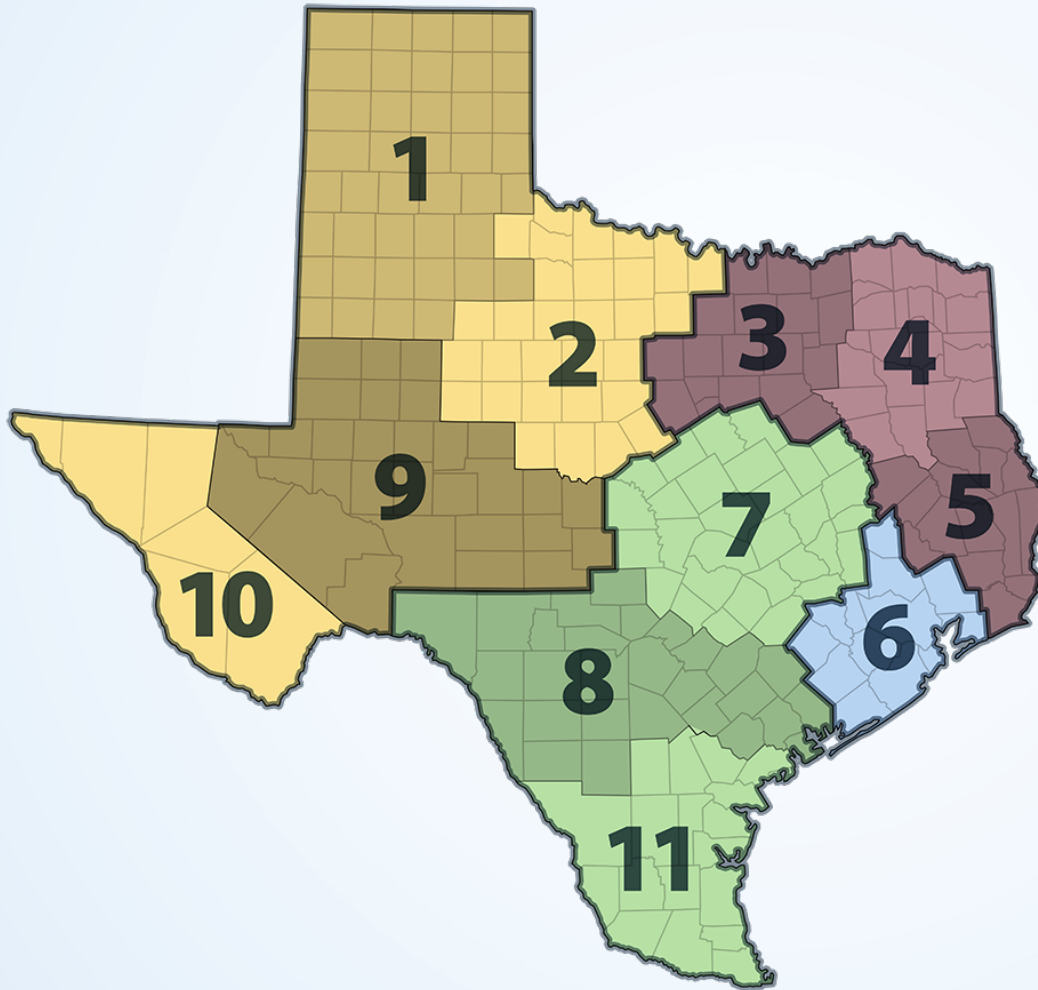
anna.blake@dfps.texas.gov





Texas Department of
Family and Protective Services

Regional Leadership Model



- Regions 1/2/9/10
- Regions 3/4/5
- Region 6
- Regions 7/8/11

Faith-Based and Community Engagement



Texas Department of
Family and Protective Services

The Value We Bring



We help educate people about abuse and neglect and how to report it.

Faith-Based and Community Engagement



Texas Department of
Family and Protective Services

The Value We Bring



We build
partnerships with
corporate groups,
faith communities,
nonprofits and
volunteers to serve
children, families
and adults.

Faith-Based and Community Engagement



Texas Department of Family and Protective Services

Staff Roles



**Faith-Based
Program**



**Emergency
Resource Rooms**



**Volunteers
and Interns**



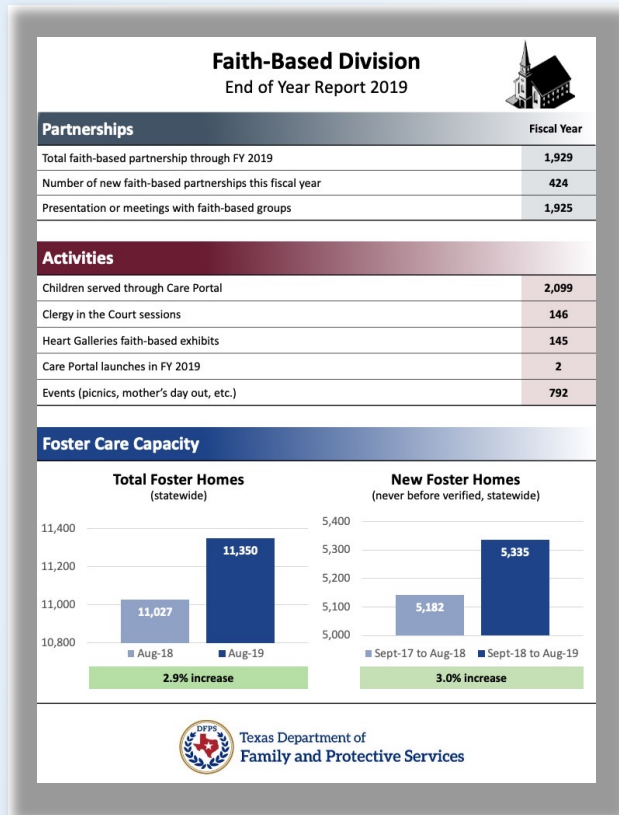
**Community
Engagement**



**SWI and
Youth Helpline**



**Advisory
Committees**



- 1995** The Advisory Committee on Promoting Adoption of Minority Children (ACPAMC)
- 2003** Congregations Helping in Love and Dedication (CHILD)
- 2016** Re-energized Faith-Based is part of the Commissioner's 10-point plan
- 2020** The Commissioner formed the Office of Faith-Based and Community



- **Human Trafficking Sunday – January**
Human Trafficking Awareness Month
- **Blue Sunday – April**
Child Abuse Prevention Month
- **Stand Sunday – November**
Adoption Awareness Month



Texas Department of
Family and Protective Services

We Promote Adoption



**Adopt a child
Why not you?**



Texas Adoption Resource Exchange

Faith-Based and Community Engagement



- Clergy in Court for Kids
- Foster/Adopt Ministry
- CarePortal and Adopt-A-Family
- Babysitting/Parents Night Out
- Awareness Events

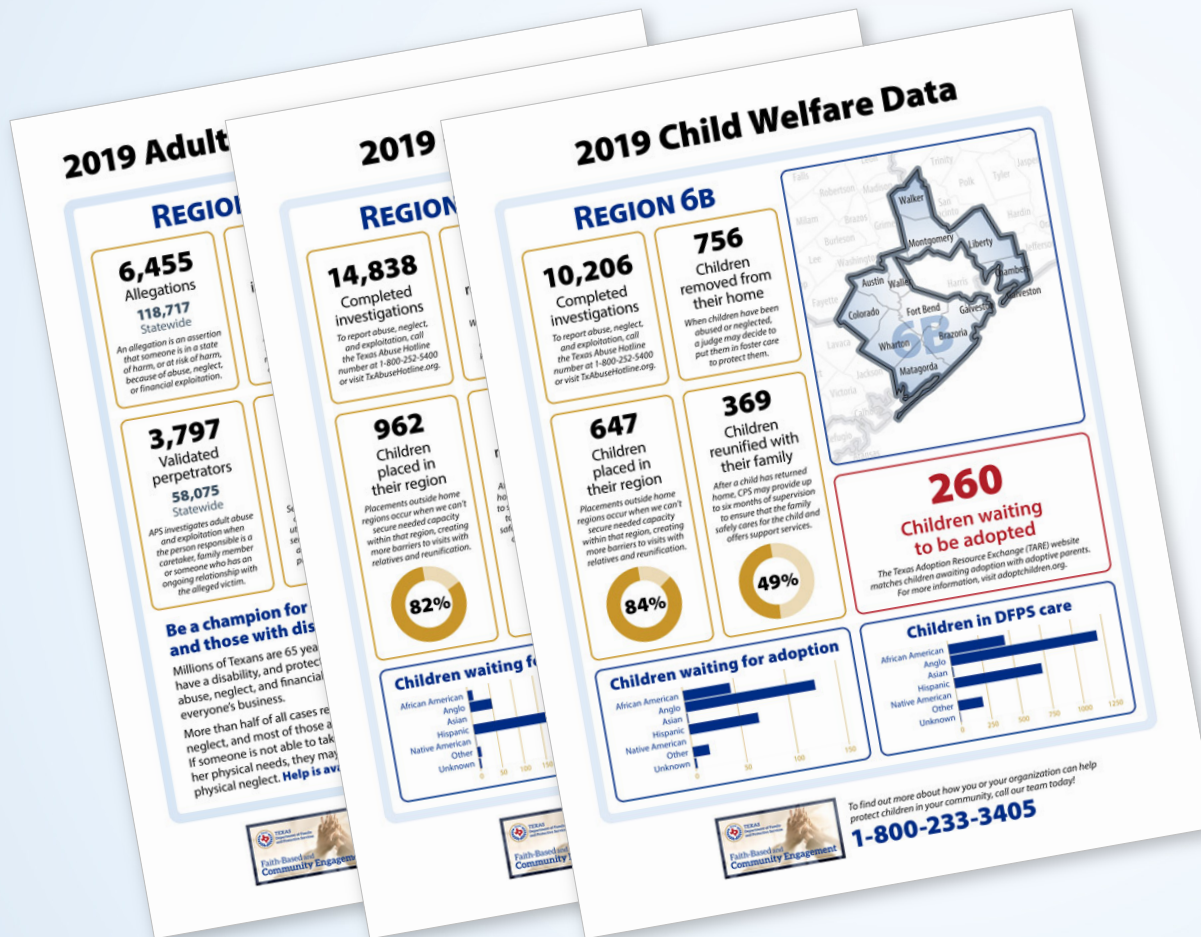


- 2,000+ Faith Partners
- 23 Bed Ministries
- 26 bag ministries
- Regional Summits
- Hundred of events throughout the year



Texas Department of Family and Protective Services

Data Driven



We are committed to connecting with partners in areas of critical need.



Texas Department of
Family and Protective Services

Emergency Resource Rooms



- 136 Rainbow Rooms
- 36 Silver Star Rooms

Faith-Based and Community Engagement



Engaging the Community



We recruit volunteers to help us with our work

- Sit in the hospital with children
- Assist caseworkers in the office
- Build wheelchair ramps, do yardwork, and make home repairs for older adults
- Sort clothing and supplies in the resource rooms



Texas Department of
Family and Protective Services

FY20 Volunteer Impact



4,705
volunteers & interns



326
volunteer groups




\$2.8 million
in value



Faith-Based and Community Engagement



CarePortal

Adopt a
Family 

- ✓ 39 counties
 - ✓ 521 Faith partners enrolled
 - ✓ 13,740 children served
 - ✓ Economic impact \$3,705,513
-
- ✓ 27 counties
 - ✓ 125 Faith partners enrolled
 - ✓ 2,300 children served
 - ✓ Economic impact \$345,650



Advisory Committees



We also engage the community by inviting them to serve on statewide advisory committees.



Texas Department of
Family and Protective Services

Advisory Committees

CARP

Committee on Advancing
Residential Practices

YLC

Youth Leadership
Council

PPP

Public Private
Partnership

PCG

Parent Collaboration
Group

ACPAMC

Advisory Committee on Promoting
Adoption of Minority Children

Council

Family and Protective
Services Council

Faith-Based and Community Engagement



Texas Department of
Family and Protective Services

Thank You

Any questions?

Contact Anna at anna.blake@dfps.texas.gov