

# Public Private Partnership Meeting

July 15, 2022

**Welcome!**

# Introductions

PPP Co-Chairs - Jenifer Jarriel, Erica Banuelos, and Trisha Thomas

# Children Without Placement Update

Erica Banuelos, Interim Associate Commissioner for Child  
Protective Services (DFPS)

# Kinship Services Update

Rocky Hensarling, Director of Permanency (DFPS)



**TEXAS**  
Department of Family  
and Protective Services  
*Child Protective Services*

# **Texas Kinship Steering Committee**

---

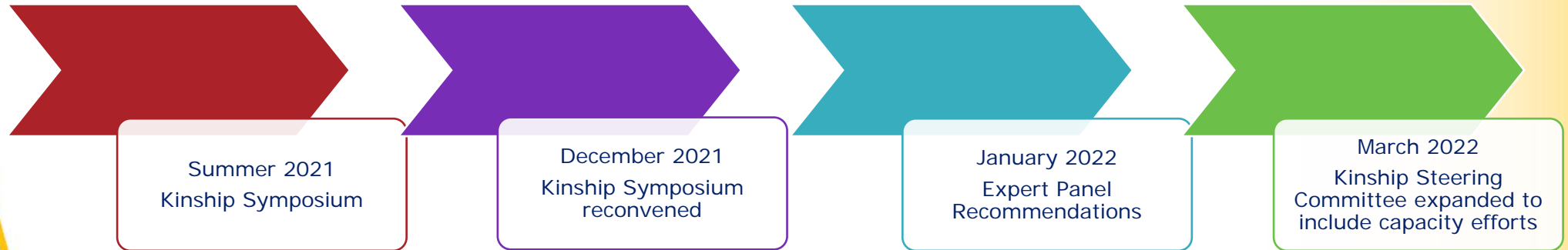
**Rocky Hensarling,  
CPS Director of Permanency**

# Timeline

---



**TEXAS**  
Department of Family  
and Protective Services  
*Child Protective Services*



# Objectives



**TEXAS**  
Department of Family  
and Protective Services  
*Child Protective Services*

- To strengthen kinship care and out of home care in Texas by recommending changes to policy and practice.
- To create a streamlined cross-agency approach to implement changes to policy and practice.
- To address recommendations made by the Expert Panel



# Guiding Principles

**We** are accountable to the children, youth, families and communities we serve.

**We** believe the voices of children, youth and families are integral to informing and transforming the system.

**We** believe all children, youth and families should be treated with dignity and respect.

**We** believe children deserve to be mentally, emotionally, and physically safe as well as cared for in settings that permit them to develop, thrive, and heal.

**We** believe the inherent value of children's connections to family should be respected and children should ideally be cared for by family.

**We** believe in equitable treatment for children, youth, and families.

**We** believe we must understand how our work impacts children, youth and families in order to identify the existing opportunities, barriers, and challenges.

**We** believe in using data and other evidence to inform our decisions and make adjustments for continued quality improvement.



TEXAS

Department of Family  
and Protective Services

Child Protective Services





# Structure

Communication /  
Feedback Loops

## Steering Committee

The Texas Kinship Steering Committee is a group of advisors that provides direction and support, determines priorities, and has decision-making authority.

## Core Team

The Texas Kinship Core Team is the driver of the collaborative and provides project planning, facilitation, and support. The Core Team connects resources, ensures the right voices are at the table, and provides subject matter expertise.

## Workgroups

The Texas Kinship Workgroups are teams with specific areas of focus. The Workgroups are made up of diverse team members that bring an array of knowledge and expertise. The Workgroups are responsible for developing recommendations for change.

# Steering Committee and Core Team Membership

---

- DFPS Leadership
- HHSC Leadership
- Texas Alliance of Child and Family Services
- Texas Children's Commission
- Texas CASA
- Office of Community Based Care Transition
  - 2INgage, OC-OK, St. Francis Ministries, Belong
- Deckinga Group
- Casey Family Programs



TEXAS

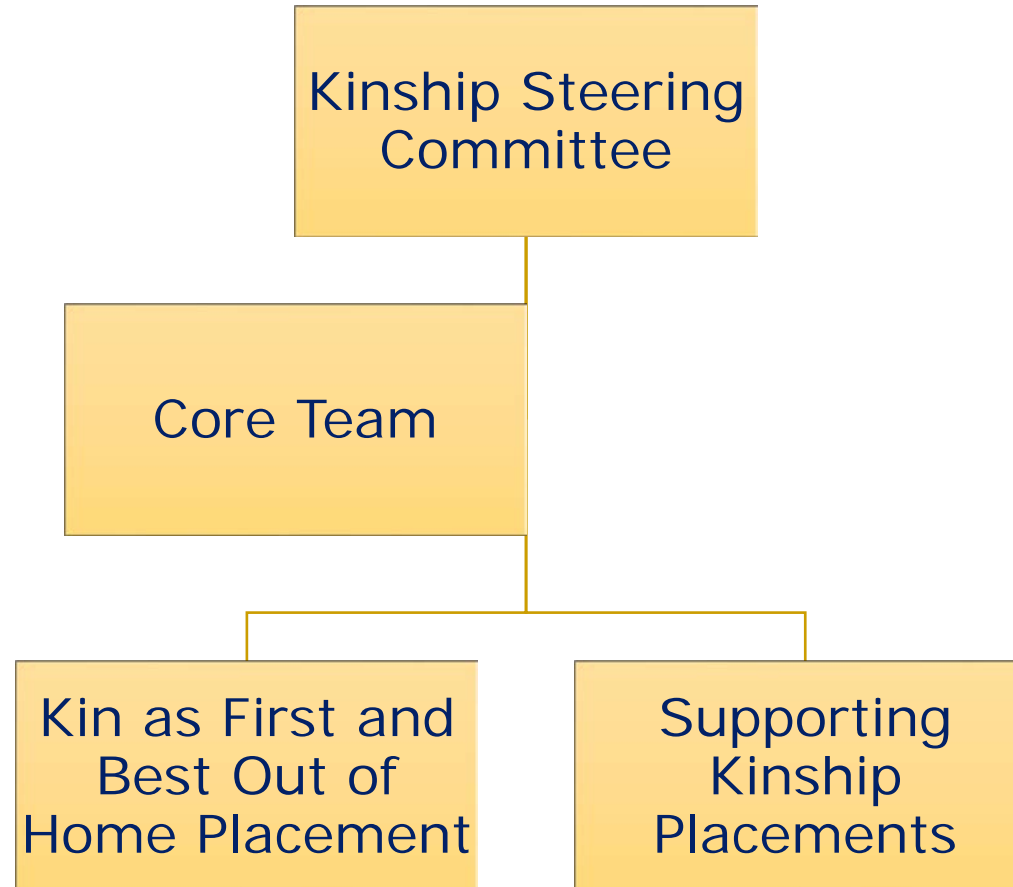
Department of Family  
and Protective Services

*Child Protective Services*



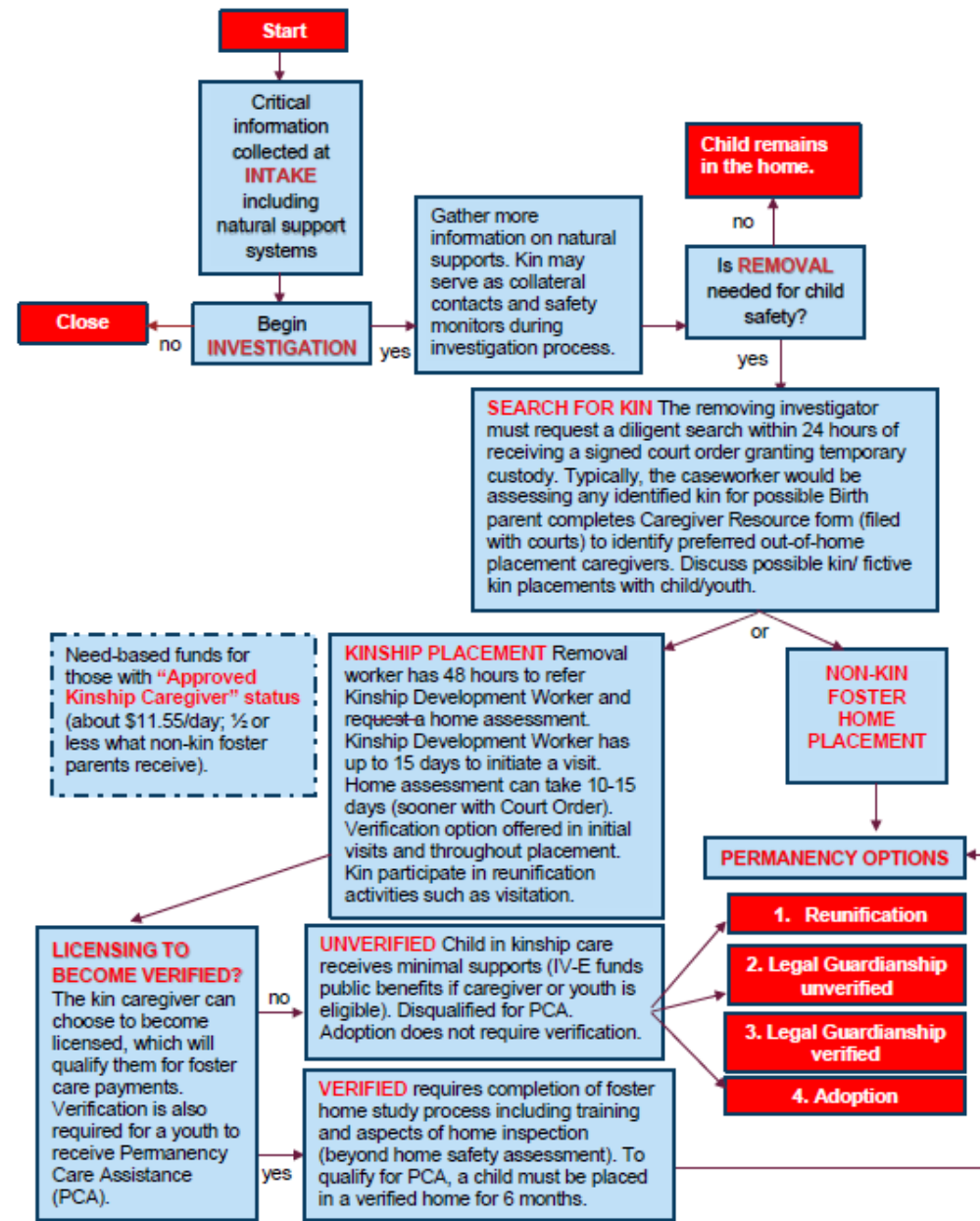
# Workgroups

---





**Texas Kinship Caregiver Experience Map: Intake to Permanence**  
 3-15-2022





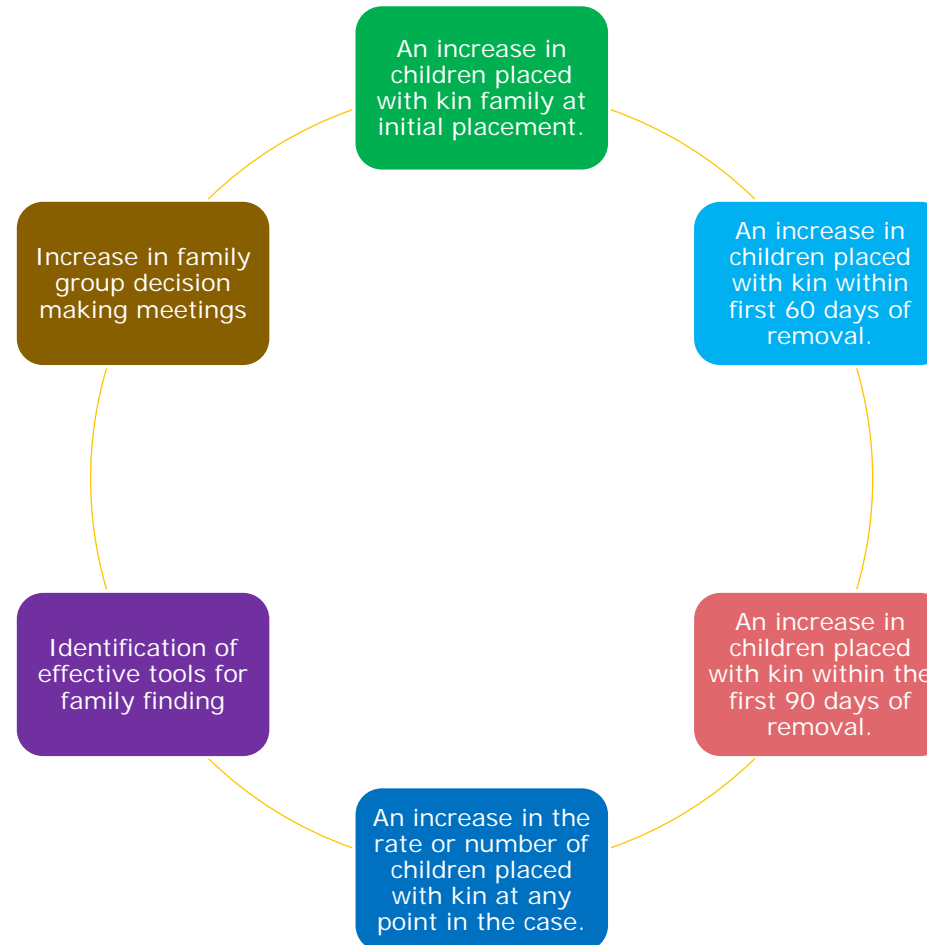
# Workgroup 1 – Kin as first and best out of home placement

---

- Whenever possible, children should be reunified or maintained in their own homes.
- Explore what system changes are required to enhance kinship-first placement strategies
- Place with kin throughout a case and until they exit from care
- Continually strive to identify family placements and connections throughout the case



# Workgroup 1 – Kin as first and best out of home placement – Outcome Measures





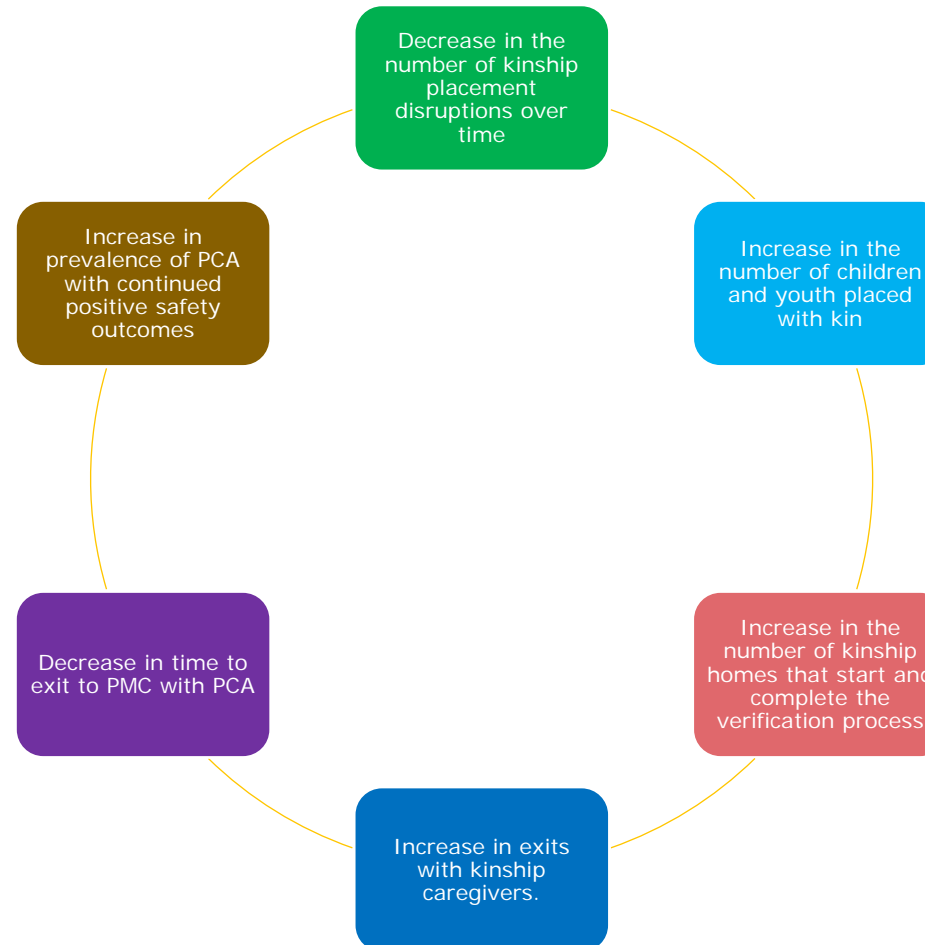
## Workgroup 2 – Supporting Kinship Placements

---

- Explore sustaining Kin placements, verifying kin and supporting stable exits to permanency with kin.
- System changes are recommended to increase supports, maintain placement stability
- Look at barriers to caregivers becoming verified
- Increase awareness and understanding around waivers and variances
- Kinship Navigators
- Creating a provisional license for Texas



# Workgroup 2 – Supporting Kinship Placements – Outcome Measures







# Next steps

## July 2022

Kinship Workgroups finalize project plans  
Core Team finalizes tracking plan and method and begins to capture activities and efforts

## August 2022

Workgroup and subgroup project plans are finalized  
Combine workgroup project plans into a single kinship project plan  
Core Team and others continue to add details to activity tracker

## September 2022

Project Plan finalized to pass for ongoing tracking  
Combined project plan presented to Steering Committee  
Steering Committee members review kinship project plan and give feedback  
Activity tracking is completed as well as a summary of activities



# Why Kinship matters to me...





**TEXAS**  
Department of Family  
and Protective Services  
*Child Protective Services*

**Texas**  
**Kinship**  
**Caregivers**

Follow us on  
Facebook, use the QR code



This page connects Kinship Caregivers to helpful information and resources.

# Questions?

---

**rocky.hensarling@dfps.texas.gov**

# Rate Modernization Update

Kaysie Taccetta, Federal Funds Division Manager (DFPS)



**TEXAS**  
Department of Family  
and Protective Services

# Foster Care Rate Modernization

---

July 14, 2022

Public Private Partnership

# 87<sup>th</sup> Texas Legislature, General Appropriations Act, Special Provision 26



TEXAS  
Department of Family  
and Protective Services

Directs DFPS to develop, with the assistance of HHSC, to develop an alternative reimbursement methodology proposal for the 88<sup>th</sup> Legislature for foster care and community-based care rates.

# Foster Care Rate Modernization: Goal & Objectives



TEXAS  
Department of Family  
and Protective Services

## Goal:

*“The goal of Foster Care Rate Modernization is to improve outcomes for children, youth, and young adults through the establishment of a well-defined service continuum that meets the needs of the foster care population and recognizes and compensates the caregiver for delivering high-quality services.”*

## Objectives:

- Determine what kind of services are needed, and clearly define each of the needed service models.
- Establish a new rate methodology that better aligns the cost of care with service provision and incentivizes improved child outcomes.

# Categories of Methodology Development



**TEXAS**  
Department of Family  
and Protective Services

Categories of Development	Lead	High-level Subcategories
1. Clearly Defined Foster Care Program Models/ Service Continuum	DFPS	<ul style="list-style-type: none"> <li>Define existing continuum and identify any gaps in services/ define new services needed</li> <li>Incorporate Provisions from relevant Legislation Coming out of 87<sup>th</sup> Regular Session (SB 1896 &amp; SB 1575)</li> <li>Establish expectation, training staffing model/structure for each part of model, after care (if applicable) including performance outcomes that may be tied to incentive payments to providers</li> </ul>
2. Assessment and Utilization Management	DFPS	<ul style="list-style-type: none"> <li>Evaluate use of CANS and other tools to determine placement and evaluation of child need</li> </ul>
3. Establishing New Foster Care Rate Methodologies to Support New Continuum	HHSC	<ul style="list-style-type: none"> <li>Conduct Market-Analysis &amp; analyze Cost Report Data using defined service continuum</li> <li>Consider aftercare support costs for certain providers</li> </ul>
4. Community-Based Care Foster Care Rate Methodology	HHSC	<ul style="list-style-type: none"> <li>Using newly defined service continuum and rate methodology establish blended and exceptional rates (DFPS lead)</li> <li>Implement a risk reserve (DFPS lead)</li> </ul>
5. Opportunities to Maximize Federal Funds	HHSC and DFPS	<ul style="list-style-type: none"> <li>Analyze child-specific costs as well as other costs and determine enhanced methods for federal claim</li> </ul>





**TEXAS**  
Department of Family  
and Protective Services

# General Approach

- Conduct a thorough review of Texas-specific child-level and needs assessment data to determine what services are needed to improve capacity and address gaps in the foster care continuum.
- Identify minimum standards, statutory, and court requirements that are inherent in the different types of primary packages and service add-ons.
- Conduct national research and engage with stakeholders to identify and validate best practices and build out models in a manner that allows for identification and capture of reasonable and necessary expenses under a new rate methodology.

# Foster Care Rate Modernization- How Does It Work

## BASIC CONCEPT FOR NEW SERVICE PACKAGES



The CANS (or other assessment tool) will inform a child's Primary Setting.



The child will be assigned to **ONLY** one Primary Setting.  
*If the assessment tool indicates more than one setting as equally appropriate, then the setting with the highest rate will be selected and if needed, availability of beds by setting may also be reviewed.*

**FOSTER FAMILY CARE**  
Primary Settings

- Basic Foster Family Care
- Short-Term Assessment & Stabilization Services
- Complex Medical Needs
- Treatment Foster Family Care
- IDD & Autism
- Sexual Aggression/Sex Offender
- Mental & Behavioral Health
- Human Trafficking
- Substance Use

Add-Ons (Support Services):

- Transition
- Pregnant & Parenting Youth
- Kinship Care

**GRO TIER I**  
Primary Settings

- Basic Child Care Operation
- Emergency Assessment & Stabilization Care
- Complex Medical Needs
- IDD & Autism
- Sexual Aggression/Sex Offender
- Mental & Behavioral Health
- Pregnant & Parenting Youth
- Human Trafficking
- Substance Use

*This package of settings is designed to provide services to support community transition.  
Add-ons are not an option for this package.*

**GRO TIER II**  
Primary Settings

- Aggression & Defiance
- Complex Medical Needs
- Complex Mental Health
- Sexual Aggression & Behaviors
- Human Trafficking
- Substance Use

*This package of settings is designed to provide services to youth with the highest acuity of needs.  
Add-ons are not an option for this package.*



**CHILD'S PACKAGE**



**TEXAS**  
Department of Family  
and Protective Services

# Current and Foster Care Rate Modernization Systems



**TEXAS**  
Department of Family  
and Protective Services

	Current System**	Foster Care Rate Modernization Systems			
<b>Children Served</b>	All children, youth, and young adults in paid foster care Placements	All children, youth, and young adults in paid foster care Placements			
<b>Placement Array</b>	<ul style="list-style-type: none"> <li>• Foster Home</li> <li>• GRO-Basic Child Care Services                             <ul style="list-style-type: none"> <li>• Emergency Shelter</li> </ul> </li> <li>• GRO Treatment Services</li> <li>• Residential Treatment Centers</li> <li>• Supervised Independent Living (SIL)</li> </ul>	<b>Foster Family Care</b> (Home-based Community Services)	<b>GRO- Tier I</b> (Facility-based Treatment Services)	<b>GRO- Tier II</b> (Sub-Facility-based Acute/Stabilization Services)	<b>Supervised Independent Living Services</b>
		9 Primary Packages & 3 Service Add-Ons	9 Primary Packages	6 Primary Packages	Same as current continuum of SIL array
<b>Contracting Method*</b>	<ul style="list-style-type: none"> <li>• Providers respond to an open enrollment solicitation and are awarded a contract based on license-type and service level requirements</li> </ul>	<ul style="list-style-type: none"> <li>• Defined procurement for each service package, provider must have specific programming and structure to support unique service population. Requires providers to specialize in type(s) of service(s) provided</li> </ul>			
<b>Assessment/Services*</b>	<ul style="list-style-type: none"> <li>• Children are assessed and determined to have one of five service levels (Basic, Moderate, Specialized, Intense, &amp; Intense Plus). The child is matched to a provider in the service array that has been approved to offer services congruent to the child's service level</li> </ul>	<ul style="list-style-type: none"> <li>• Comprehensive assessment*** that identifies the child's individual service needs and helps direct the child to providers specializing in identified services.</li> </ul>			
<b>Payment Method</b>	<ul style="list-style-type: none"> <li>• Daily provider payment is tied to child's authorized and providers billing service level</li> </ul>	<ul style="list-style-type: none"> <li>• Daily provider rate tied to the specific service delivered.</li> </ul>			

\*Some exceptions include Treatment Foster Family Care, Emergency Shelters, SIL, some SSCC, and child-specific contracted placements

\*\* SSCC providers are paid a blended rate based on the various service levels/types of placements and may contract with providers differently under CBC

\*\*\*Process and tool development will occur in next stage of project.

# Current Work- Develop Implementation Plan to inform Exceptional Item Request



TEXAS  
Department of Family  
and Protective Services

- DFPS is working with the OCBCT and the Texas Institute for Child and Family Well-being and Casey Family Programs on implementation planning to support the new service continuum.
- Selecting/developing an assessment tool(s) and utilization management process that can support the new service continuum and methodology.
- Establishing rate methodology to support Community-based Care.
- Establishing a proposed periodicity schedule for methodology review.
- Evaluation efforts to ensure maximization of federal funds.
- Implementation will require extensive changes to numerous systems including:
  - All foster care (DFPS and SSCC) contracts;
  - IMPACT system;
  - Method for projecting services (using the assessment tool);
  - Policy; and
  - Training.

# Questions



**TEXAS**  
Department of Family  
and Protective Services

For more information please visit:

[http://www.dfps.state.tx.us/Doing\\_Business/Purchased\\_Client\\_Services/Residential\\_Child\\_Care\\_Contracts/Foster\\_Care\\_Rate\\_Modernization/default.asp](http://www.dfps.state.tx.us/Doing_Business/Purchased_Client_Services/Residential_Child_Care_Contracts/Foster_Care_Rate_Modernization/default.asp)

Questions or to provide feedback, please email:

[dfpsratemodernization@dfps.texas.gov](mailto:dfpsratemodernization@dfps.texas.gov)

# PPP Membership Process

Cheryl Gomez, Advisory  
Committee Liaison (DFPS)

# Unsolicited Bid Process

Trisha Thomas, Community-Based Care Statewide Director (OCBCT)

# Qualified Residential Treatment Program (QRTP) Update

Qualified Residential Treatment Program  
(QRTP)

Jillian Bonacquisti, Director of Placement Services (DFPS)



# House Bill 3041 Update

Sasha Rasco, Associate Commissioner for Prevention and  
Community Well-Being (DFPS)

# Single Source Continuum Contractors (SSCCs) Updates

- Saint Francis Community Services
- 2Ingage
- Our Community Our Kids
- Belong



Saint Francis  
MINISTRIES



## Stage II Transition

### 90 Days In:

- Promoted/hired vacant supervisor positions for a total of 9 supervisors
- Met hiring need for Permanency Specialist
- Approximately 80% of needed staff have been hired
- Continuing to train and onboard staff
- Continuing to work through process and procedures
- Hiring vacant positions as needed
- Continuing to shape the culture within our work
- Managing caseloads

### The Next 90 Days:

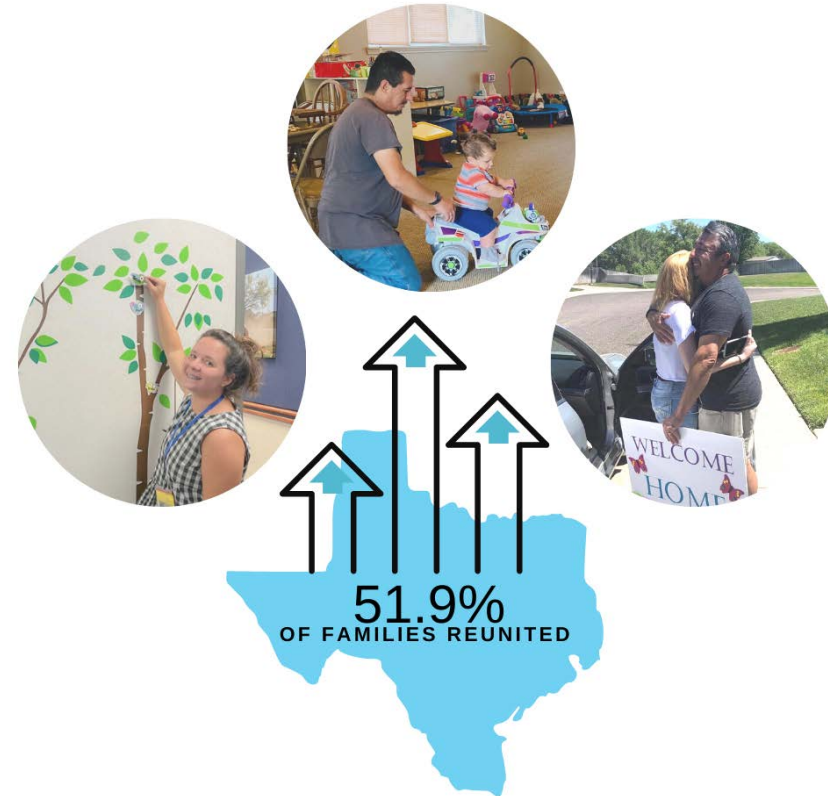
- Implementing the Saint Francis Ministries case management model 9-1-2022
- Continuing to implement the leadership structure that will support staff and children and families

Dallam	Sherman	Hansford	Ochiltree	Lipscomb	
Hartley	Moore	Hutchinson	Roberts	Hemphill	
Oldham	Potter	Carson	Gray	Wheeler	
Deaf Smith	Randall	Armstrong	Donley	Collingsworth	
Parmer	Castro	Swisher	Briscoe	Hall	Childress
Bailey	Lamb	Hale	Floyd	Motley	
Cochran	Hockley	Lubbock	Crosby	Dickens	King
Yoakum	Terry	Lynn	Garza		

# Newsworthy Updates

## *Good News!*

- Since March 2022, average reunification rate is 51.9%
- Children placed in their home community:
  - March 43%
  - April 50.3%
  - May 52.9%
- Siblings placed together: Average is 64%
- 51% reduction of children placed out of state in residential treatment centers
- March – May 2022 no children under SSCC Supervision



# Partnership through Community

## *Community Engagement*

Collaboration within communities to help meet the needs of children and families:

- First ever “Family Matters!” National Reunification Month celebrations were a HUGE hit with the community!
  - Lubbock – Water Rampage
  - Amarillo – Canyon Aqua Park
- Central Church of Christ in Amarillo donated a new “Visitation House”
  - Staff went out and got donations to fully furnish and decorate the house!
- Over 30 churches and community centers in region have to-date opened their doors and hearts to kids in care for supervised visitations; still in the process of working more MOUs



## Capacity Building – It’s more than beds!

### **Saint Francis QRTP (Qualified Residential Treatment Program):**

- Opening Fall 2022
- Hired Executive Director, Kristina Brown

### **Continued work within the SSCC Shared Capacity Plan:**

- Foster Care Recruitment Blitz
  - Collaboration with SSCCs, TACFS, and Daley Solutions
  - Focuses on recruitment statewide and family-finding
  - Create [fostertx.org](http://fostertx.org) website, social media, and outward channels to drive recruitment

### **Continued work within Saint Francis Capacity Building:**

- Kinship Support – Disbursing \$400,000 to support kinship families
- Treatment Foster Care – Creating collaborations in developing TFC homes
- Placement Incentives – Incentivizing placement children over 10 years of age and sibling groups.
- “It Takes Everything” Campaign – Targeted marketing campaign for the Panhandle to bring awareness of the needs in the various counties



## ***Prevention Services Pilot***

Saint Francis has recently been chosen to pilot an evidence-based primary prevention program in 9 Texas counties. We will be utilizing the FCT (Family Centered Treatment Model) in the following counties:

- Carson
- Gray
- Hemphill
- Hutchinson
- Lipscomb
- Moore
- Ochiltree
- Potter
- Wheeler



"I am thrilled to have an opportunity to see children and families in Texas receive a powerful in-home service designed to keep families together and reduce long-term effects of trauma that may occur with out-of-home placements... We will use Family Centered Treatment as our tool to preserve the family unit and partner with DFPS and the courts."

**VICE PRESIDENT OF PREVENTION SERVICES,  
DR. NICOLE MCCAULEY**





Saint Francis  
Texas

**Thank you for your time!**

Rachel Williams-Ehue, Regional Vice President

[Rachel.Williams@st-francis.org](mailto:Rachel.Williams@st-francis.org)

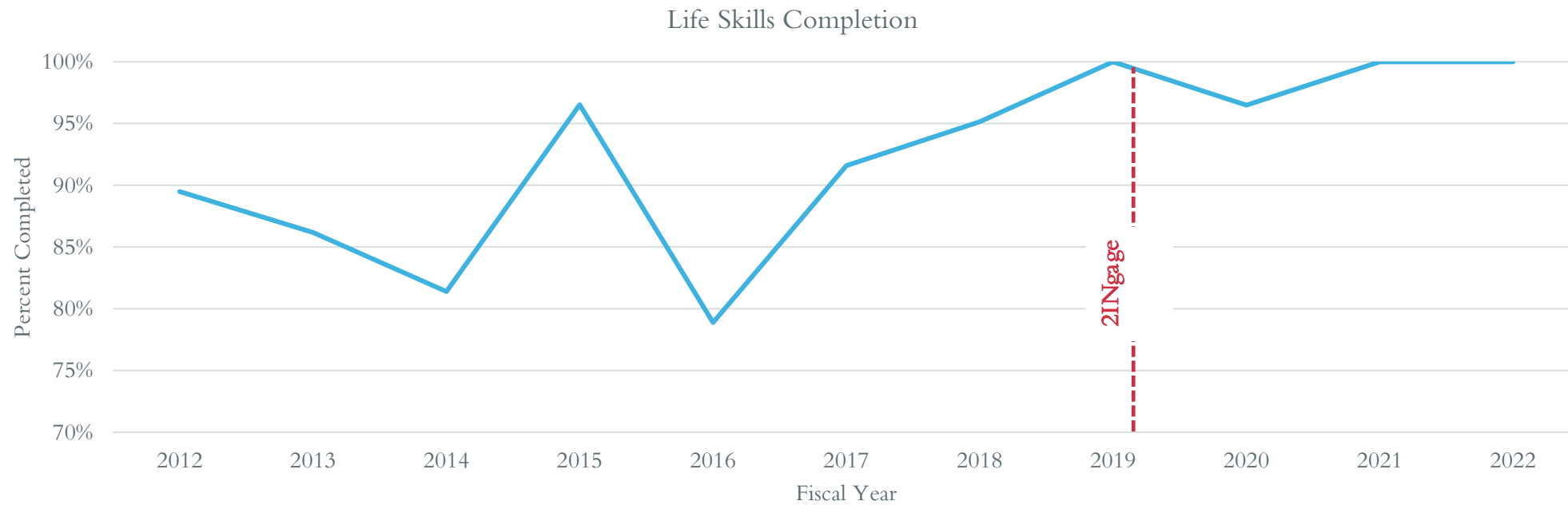
(806) 553-5106 ext 2994

PREPARATION FOR  
ADULT LIVING (PAL)



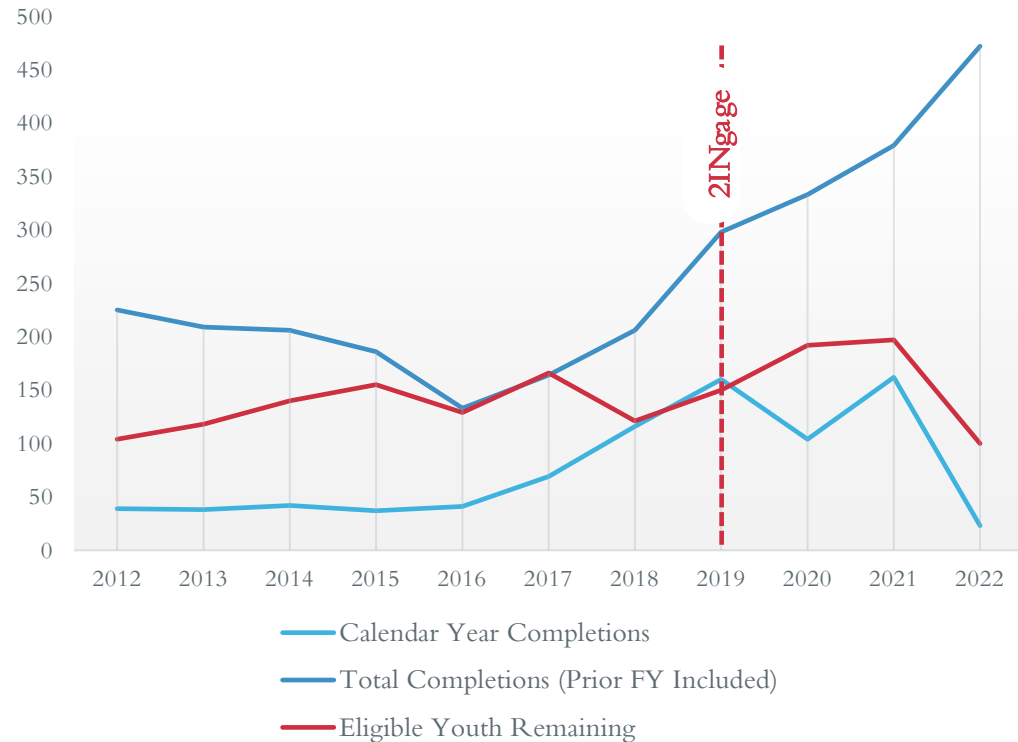
# LIFE SKILLS TRAINING (LST)

## COMPLETION PERCENTAGE FROM 2012-2022



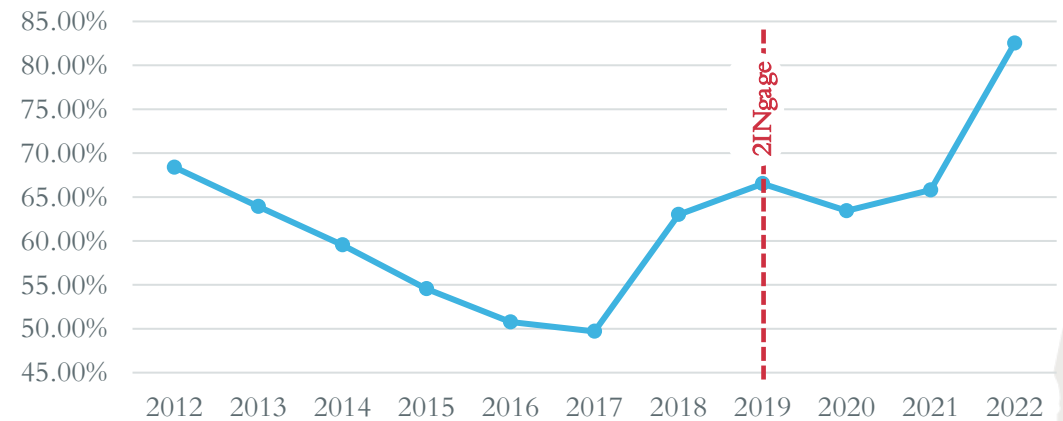
# ANSEL-CASEY LIFE SKILLS ASSESSMENT (CLSA) – HISTORICAL REGION 2

CLSA Comparison



- ✓ Red line shows the number of remaining eligible youth going into the new fiscal year
- ✓ Number of completions in calendar year has increased significantly.

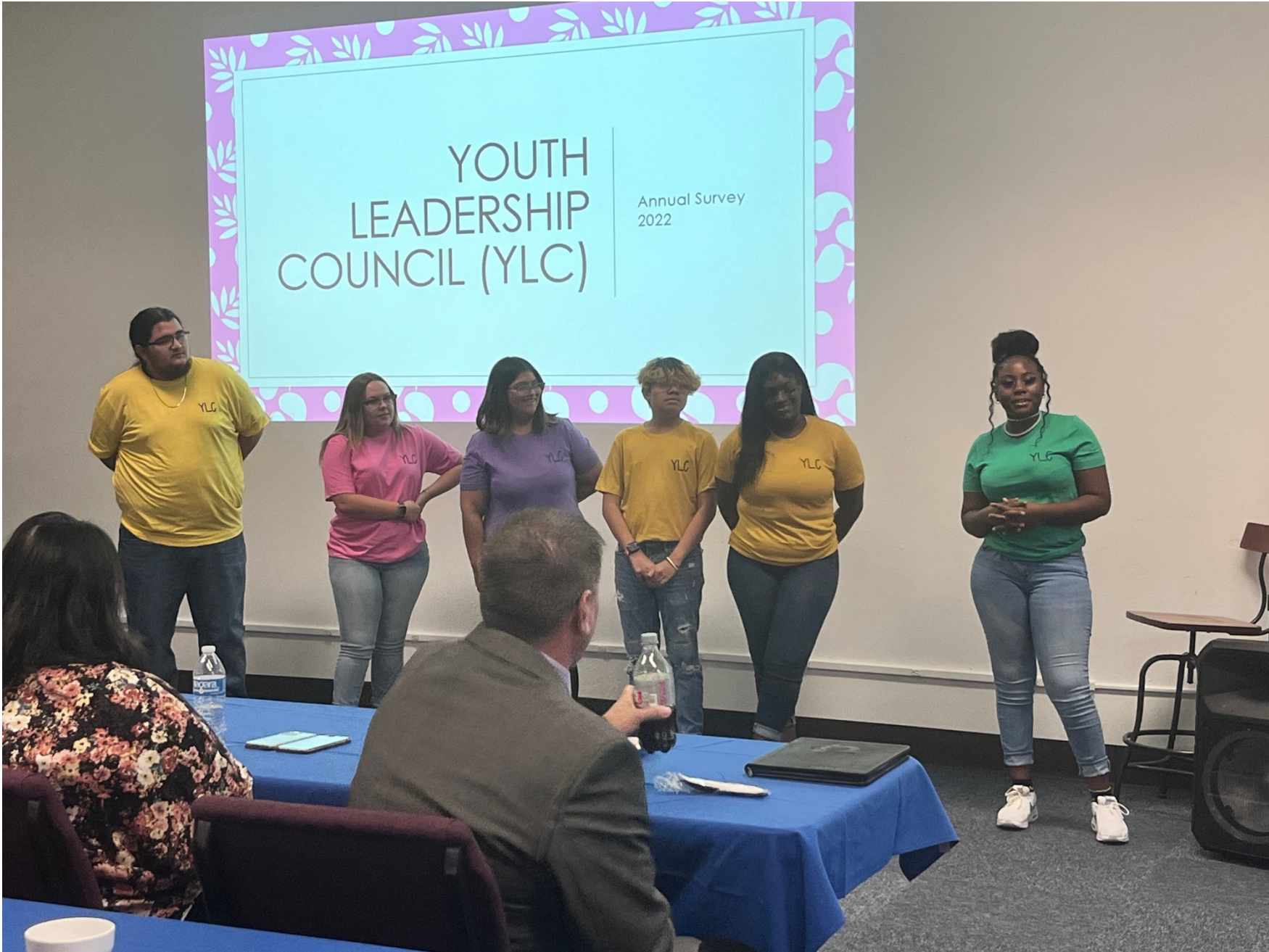
Percentage Reported FY





## 2INGAGE FORMAT

- Student government format
- Elected leadership positions
- Youth governed meetings

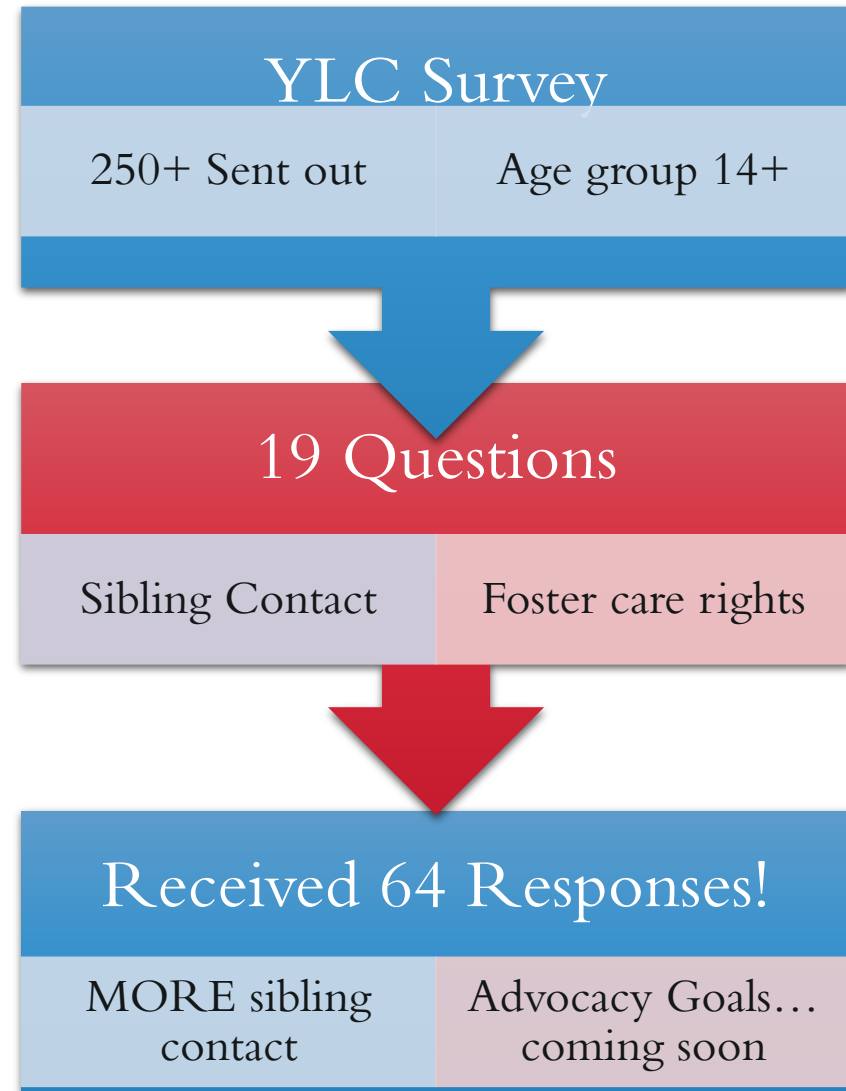


# YLC STATUS AND ACCOMPLISHMENTS

## Current

- Membership
- Projects
- Meeting Format
- Monthly virtual team discussions

Mission Statement: Our purpose is to come together to be the voice of youth in the foster care system. To provide valuable support, experience, and opportunities to make a difference.



"I like YLC because it makes me feel like I have a voice and a say in CPS and I feel like I can help a lot of kids through YLC" - Veronica G, 15



"YLC helps me grow as a young adult. It shows me and teaches me how I can go into the real world." - Anastasia W, 17



"I like the YLC because it taught me about my rights and showed me my benefits as a foster kid. It has helped me gain my independence and learn how to have my own voice" - Kelsea C, 15



"I like the YLC because it gives us foster kids a chance to speak up and speak our mind on some of the pressing issues in the CPS system " - Xavier D, 17







# PROMOTING INDEPENDENCE THROUGH EDUCATION – IMPROVING THE HIGH SCHOOL GRADUATION RATE

2021

- 29 High School Graduates
- 10 Attended College

2022

- 32 High School Graduates
- 14 Attending College

"I graduated from Woodson but still walked the stage with Cooper and that just proves that anything is possible so I encourage everyone to keep trying!" -Alexis H, 17



# CELEBRATING OUR GRADUATES!





UPDATE: OUR COMMUNITY OUR KIDS (OCOK)

# Region 3b: Stronger Connections with Family

# Goal: Increase Safe Kinship Placements



# Plan

1. Initial Changes to Kinship Approach at Start of Stage 2
2. Comprehensive System Assessment
3. Expansion of Kinship Services

# 1. Initial Changes to Kinship Approach

- Most home assessments came in-house
- A family-finding unit was created
- More kinship staff were hired

# Low Initial and Subsequent Kinship Placements

- Stage 2 began on March 1, 2020
  - OCOK had 21.22% of our children in kinship placements
    - Prior Years: 2018- 21.25% and 2019- 20.22%
    - One year after assuming case management though, we were at 18.9%

## 2. Comprehensive System Assessment

Engaged A Second Chance Inc (ASCI)

ASCI has provided direct kinship care services and technical assistance for over 27 years. Working within the paradigm of a theory-to-practice model, they have both designed and developed their work with families based upon the needs articulated, examined, and documented in the caseloads of our workers. Assessment, training, and technical assistance, provides a structure for building a kinship care program that is strategic and data driven, as well as culturally and racially competent.

# A Second Chance, Inc.'s Assessment

- Evaluation of our policies and procedures
- Review of applicable laws/statutes and standards
- Review of documents/forms
- Focus Groups– 26 of 5-8 people (1 hour each)
- Survey– Why are kinship placement numbers so low?
  - Is kinship more safe, as safe, or less safe than other types of placements?
  - Why are so few homes licensed?
  - Is the ACH Kinship Connections Program effective?
- Evaluation

# What we Learned

- Lack of understanding of process (all processes involved; family finding, home study, services, licensing, permanency)
- Lack of understanding of everyone's role (or that everyone has a role)
- Evidence suggesting there is some fear that kinship placements are not as safe
- Lack of understanding of all of the benefits
- Strong community, provider and legal support, especially from local judges
- When applied, Kinship Connections appears to be effective

# 3. Expand Kinship Services

ACH opened Kinship Connections in 2019 with private funding to pilot more robust services for kinship families with elevated needs.

- Families are referred to either a expediated licensure unit or support unit depending on the permanency goal.
- Services include monthly support/education groups to kinship caregivers, community resources and concrete services to provide ongoing safety and stability.

Kinship Navigator through PEI coordinated with OCOK Kinship and Kinship Connections

# What's Next?

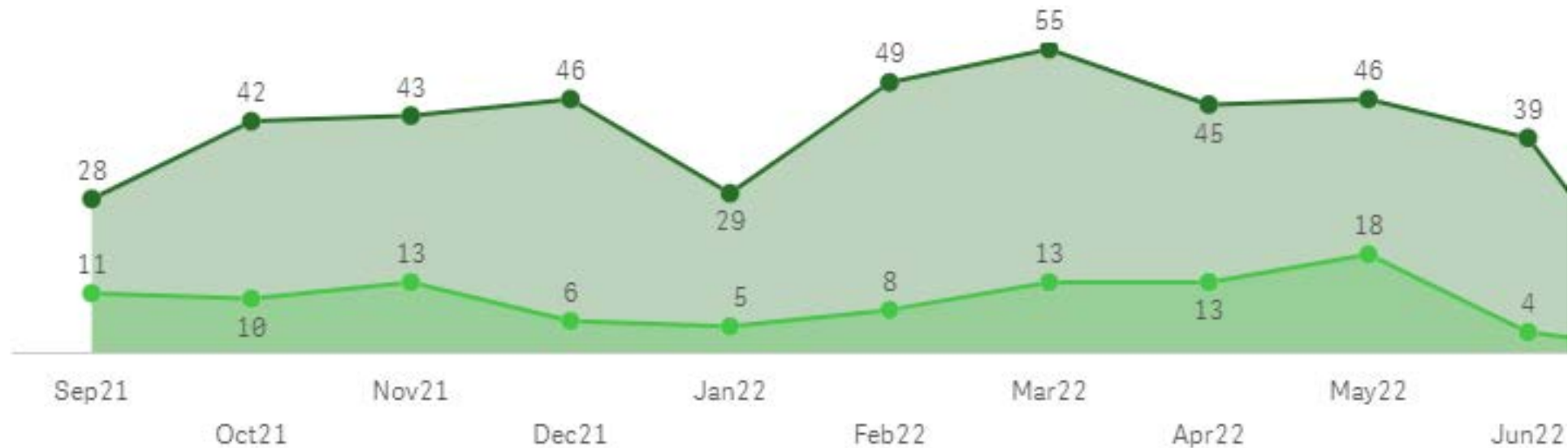
We are now at 24%

- Updating Policies and Procedures
- Process mapping
- Kinship Values Training
- Family Finding Pilot
- Home Study Recommendations
- Concrete funding
- Daycare
- CASEY Family Kinship Committee



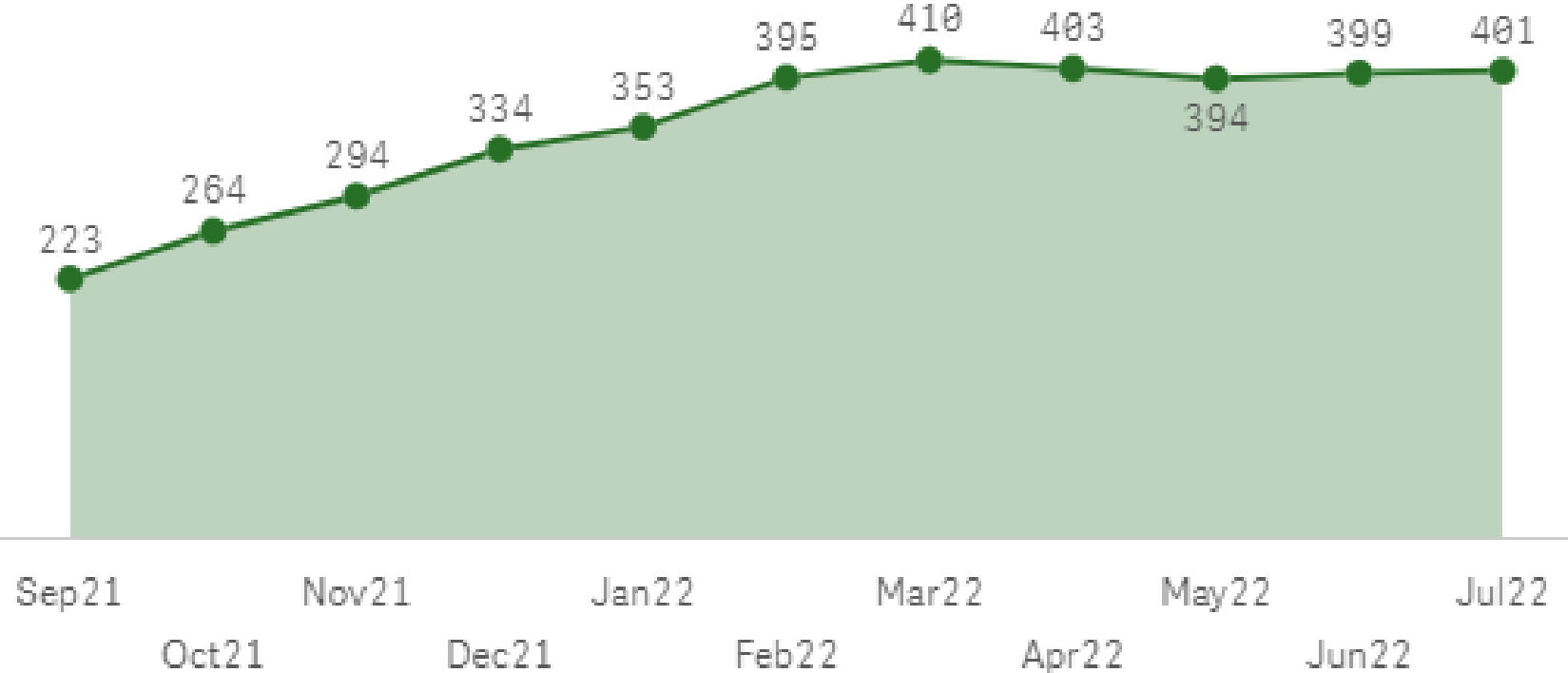
# New Kinship Placements by Month

New kinship placements by month



# Total Kinship Population on the Last Day of the Month

Total kinship population on last day of the month





# our community our kids

a division of ACH Child and Family Services



oster

# Belong: Who We Are

---

## Who We Are

---

A division of SJRC Texas

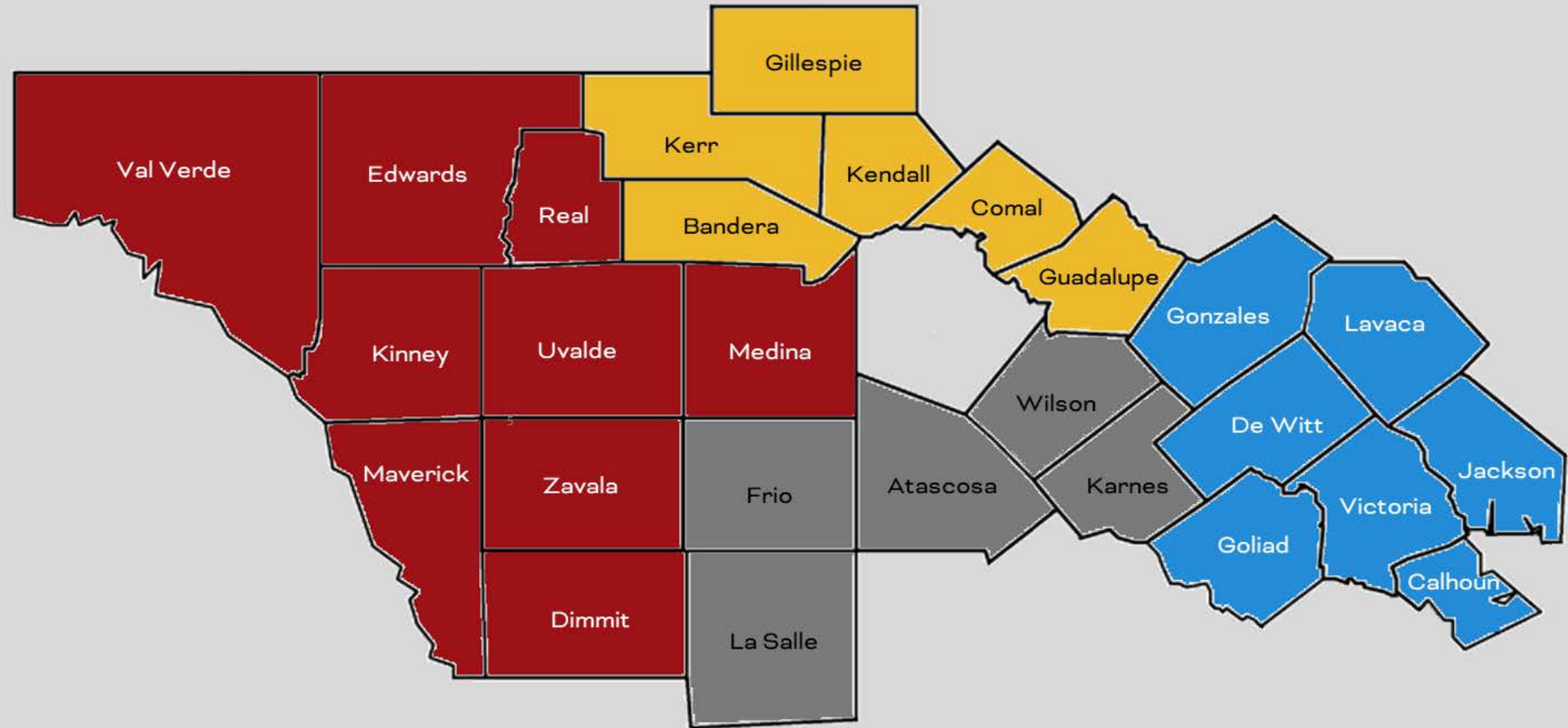


Lead provider for  
community-based care for  
the South Central & Hill  
Country Region, covering  
27 communities

# Where is the South Central & Hill Country Region (8b)?



**N**orth  
**E**ast  
**S**outh  
**W**est



# Placement Progress

Since launching services,  
we have  
**safely placed**  
**983** youth.

Nearly **70%** of South Central & Hill  
Country Region children  
are placed in a foster home  
or residential operation within  
**Region 8** (including Bexar Co.).

Of youth currently in Belong network,  
**77%**  
of paid placement days are spent in a  
**family setting.**



# Type of Placement of Youth in Belong Network

Facility Type	Number of Placements
Foster Home	462
Licensed Kinship Foster Home	131
RTC	118
Shelter	111
General Residential Operation	94
Adoptive Home	41
Supervised Independent Living	16
ICPC (Receiving State)	6
SSCC Supervision (2 or more nights)	5
<b>Total</b>	<b>984</b>



# Placement of Youth in Belong Network by Location

Placement Location	Number of Placements
North	297
East	90
South	43
West	47
Bexar County	255
Out of Catchment	246
Out of State	6
<b>Grand Total</b>	<b>984</b>

# SSCC Supervision

*The Belong House is utilized as SSCC Supervision for emergency use only.*

It has been  
**over 106 days**  
since a youth has been at the Belong House.



*From Go Live Date of October 27, 2021  
there have only been 5 total youth in  
SSCC Supervision – each at separate  
times and none more than 5 consecutive  
days.*

# Intervention, Permanency & Prevention Services



To ensure appropriate behavioral and mental health services are available, Belong is building an integrative treatment center, concentrated on support services for children and families.



In-home parenting support to promote permanency and stability.



Parents as Teachers (PAT)

C.A.R.E.  
(Case Management, Assessment,  
Resources, Education)

Fatherhood Initiative

Support Groups



# Focus on Prevention

## Stats (Jan. – June 2022)

Nearly **90%** of families enrolled in our programs moved from high risk of abuse/neglect to a low risk

Launched the PAT Parent Advisory Committee

Enrolled **40** families into PAT or C.A.R.E.

Completed over **460** home visits

Partnered with families to achieve **86** goals

**5** PAT families successfully received “**closure**” status on their CPS Cases

**4** families were **reunified** with the help of our prevention programs



# Capacity Building Efforts

- Contracted with more than **124** providers and **172** programs in network.
- Our Capacity **Building** efforts are focusing on the **right** capacity:
  - Continued collaboration with South Texas Alliance for Orphans to target faith community for recruitment of teen foster homes.
  - Partnership with Chosen and SJRC Texas to develop Treatment Foster Care Homes.
  - Targeted recruitment campaign through joint collaborative with the Texas Alliance for Child and Family Services is ongoing. Over **55** leads were generated between May-June to recruit foster families.
  - Provider Support and Consultation to ensure providers have the necessary tools to be successful with our youth.
  - Touchstone Alliance is partnering with SJRC Texas to provide appropriate behavioral, mental and physical support services for high-acuity youth in the form of a Stabilization and Assessment Center utilizing the Neurosequential Model.
    - This program is comprised of 45 beds at our Bulverde location focusing on:
      - Integrative Team-Driven Decisions
      - Reducing Psychiatric Hospital Readmissions
      - Increasing Subsequent Placement Disruptions
      - Safe and Structured Environment
      - Carefully Managed Transitions

# Stage II Readiness Updates

- Workgroups:
  - Administrative; Case Transition; CMO, Compliance, Performance; Communications, Financial Resource Network, IT Transition, Joint Operations Manual, Personnel Transition, Training Transition
- Protocol Sessions
- Hiring Fairs & DFPS Personnel Transition



# Stage II Readiness Next Steps

- Finalize Organizational Chart Structure
- Send Letters of Intent to DFPS Employees Transitioning to Belong
- Ongoing Hiring of Additional Staff
- Finalize Joint Operations Manual
- Prepare for Case Transition
- Anticipated Stage II Launch is Fall 2022

*Join our team!*



# Contact Us

Tara Roussett, CEO  
210.386.5025  
troussett@sjrctexas.org



Thank You!





# Treatment Foster Care Update

Katie Olse, CEO Texas Alliance of Child and Family Services

# Texas Alliance of Child and Family Services

- TACFS has been heavily focused on capacity building, especially for higher needs children and youth
- June 2022 - TACFS, in partnership with DFPS and Casey Family Services, hosted a roundtable on Treatment Foster Care (TFC)
  - Learned about the origin and history of TFC, which dates back to 2016
  - Overview of the recent data related to TFC
    - Recent survey of TFC caregivers – 96% felt prepared for their role
  - Reviewed the TFC assessment published by the Texas Center for Child and Family Studies
    - Heard from all three of the current TFC providers about their experience, models and approach to supporting families and children in TFC
  - Casey Family presented on the various TFC models that are evidence or research based and in use around the country
  - Data projects the need for TFC to remain high

## Texas Alliance of Child and Family Services

- Last week, the state posted an open enrollment for Child Placing Agencies interested in providing Treatment Foster Family Care (TFFC) services
- TFFC provides evidence-based, family foster care services for children with complex mental health and behavioral needs.
- Learn more about the open enrollment [online here](#).

# Texas Alliance of Child and Family Services

- To help generate a better understanding of this opportunity and the need, the TX Center for Child and Family Studies, in partnership with DFPS, will be hosting a webinar for providers interested in learning more about TFFC. The webinar will include an overview of TFFC, information from the state's first Treatment Foster Care providers, and an introduction to TFC models that are evidence-based or research-supported.
- The webinar can be found [here](#). It will be held on August 3, 2022 at 9am.
- Open to any provider and will be recorded and housed on the Center's online learning center for future reference. We really encourage any agency interested in applying for the TFC enrollment to tune in, hear the information and to share any questions that may be helpful for the State to help ensure success of this enrollment.

# Conservatorship Population Data Update

Office of Data and Systems Improvement (DFPS)



# Data Update for CARP

## Summary & Findings

Texas Department of Family & Protective Services

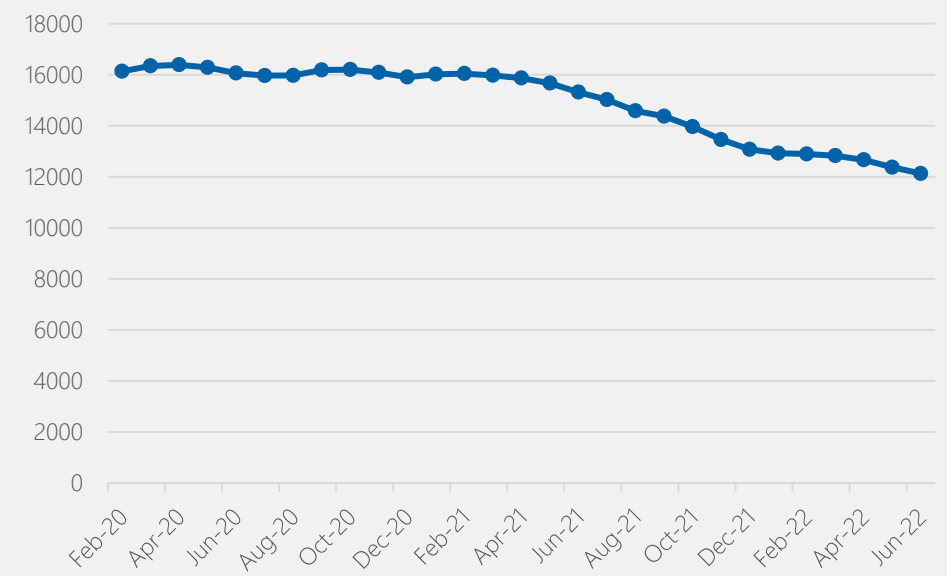
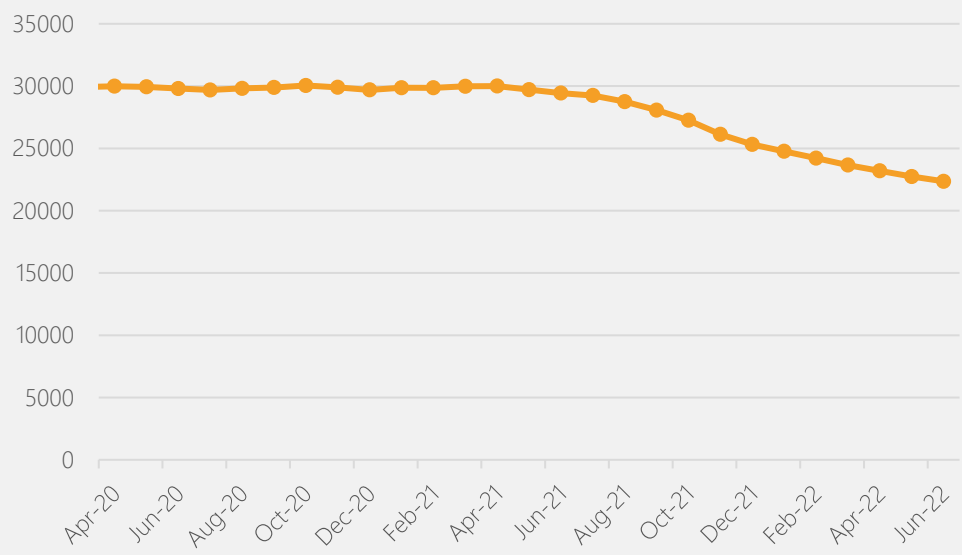


Texas Department of  
Family and Protective Services

# Decrease in CVS/Foster Care Census

## Conservatorship Census

## Foster Care Census

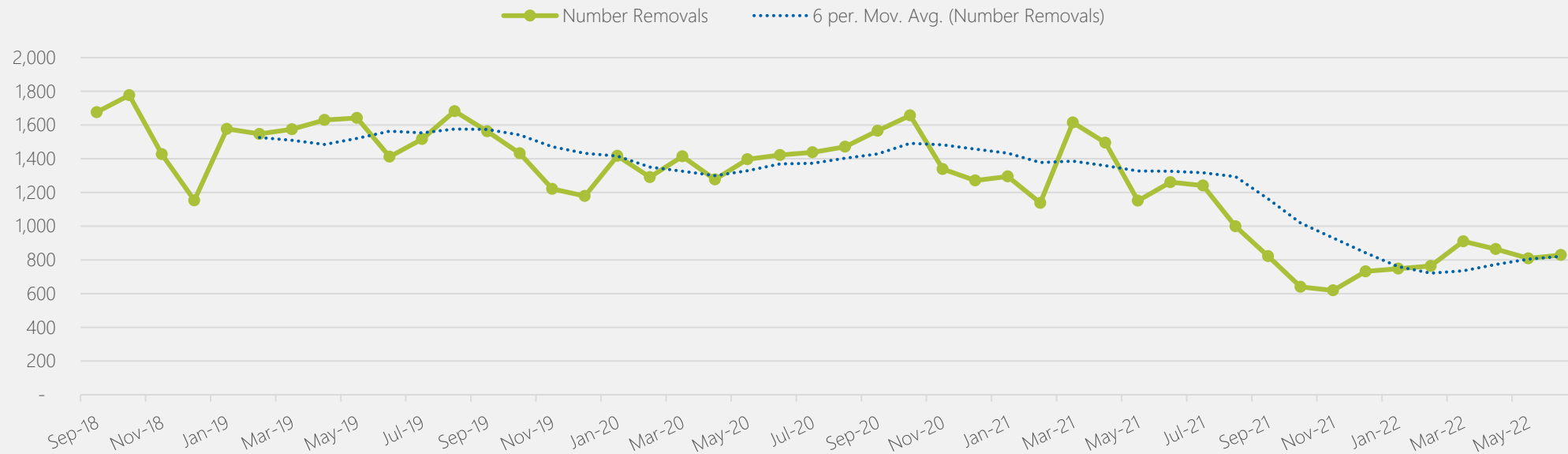


FY22 DATA IS PROVISIONAL

Data Sources: PP\_03, SA\_05

# Removals

## Removals since FY19



FY22 DATA IS PROVISIONAL

Data Sources: sa\_19



# Capacity Needs

Current Foster Care Needs *(as of start of the FY22)*

Link to FY22 Updated Foster Care Needs Assessment:

[https://tableau.dfps.state.tx.us/t/AE/views/FosterCareNeedsAssessmentStory/NeedsAssessment?:embed=y&:isGuestRedirectFromVizportal=y&:display\\_count=n&:showAppBanner=false&:origin=viz\\_share\\_link&:showVizHome=n](https://tableau.dfps.state.tx.us/t/AE/views/FosterCareNeedsAssessmentStory/NeedsAssessment?:embed=y&:isGuestRedirectFromVizportal=y&:display_count=n&:showAppBanner=false&:origin=viz_share_link&:showVizHome=n)



# Provider Workgroup Update

Bill Walsh, Director of Purchased Client Services (DFPS)

# Closing

- Questions?
- Thank you for being here!