



TEXAS
Department of Family
and Protective Services

YES Waiver Resource Guide

December 2023



**Child
Protective Services**

Table of Contents

1. Background and The Basics	3
What is the YES Waiver?	3
2. Program Goals and Eligibility Requirements	5
Overall YES Waiver Goals	5
General Eligibility Requirements	5
Clinical Eligibility Criteria	6
3. YES Waiver Enrollment Protocol	7
Ongoing Service Delivery.....	9
Questions?	9
List of Acronyms	10

1. Background and The Basics

What is the YES Waiver?

Under the direction of the 78th and 79th Texas Legislatures, the Texas Health and Human Services Commission (HHSC) and the Department of State Health Services developed Youth Empowerment Services (YES), a 1915(c) Medicaid waiver program that provides community-based services to help children and youth ages 3 through 18 with serious mental, emotional, and behavioral difficulties live in the community.

YES Waiver Services

YES Waiver services are family-centered, coordinated, and effective at preventing out-of-home placement and promoting lifelong independence and self-defined success. They go beyond the services available through other Medicaid benefits.

YES Waiver services may include, if available, the following:

- **Adaptive Aids and Supports:** Supplement YES Waiver services with medically necessary supports to prevent out-of-home placement;
- **Community Living Supports:** Help families adjust to special challenges related to the youth's mental health needs by using proven practices and strategies;
- **Employee Assistance and Supported Employment:** Help youth find and succeed at a job;
- **Minor Home Modifications:** Support the youth's ability to function independently at home and in the community;
- **Non-Medical Transportation:** Takes the child to YES Waiver services when no other transportation is available;
- **Paraprofessional Services:** Help the child deal with stressful situations through coaching and mentoring;
- **Respite:** Allows caretakers to take a temporary break from caring for youth enrolled in the YES Waiver program;
- **Specialized Therapies:** Provide nontraditional, alternative, and creative forms of therapy to help improve the youth's health, welfare, and functioning in their community, including art, recreational, music and animal-assisted therapy, as well as nutritional counseling;

- **Supportive Family-Based Alternatives:** Provide support and model healthy interactions for the whole family while the youth temporarily lives in a therapeutic home; and
- **Transition Services:** Assist with the costs of moving a child into their own home.

Wraparound Process

The YES Waiver program uses a planning process known as wraparound to create a plan specifically for the child or youth. YES Waiver services are designed to identify and support the child or youth's strengths. The wraparound process builds on the family's natural support network and connection with community resources to provide strength-based solutions for the family and youth receiving services through the YES Waiver program.

2. Program Goals and Eligibility Requirements

Overall YES Waiver Goals

The YES Waiver program goals are to:

1. Prevent or reduce institutionalization of children and youth ages 3 through 18 with serious emotional disturbance (SED);
2. Allow more flexibility in providing intensive community-based services for children and youth with SED and provide family support by improving access to services;
3. Prevent or reduce inpatient psychiatric admissions for children and youth with SED;
4. Provide a more complete continuum of community-based services and supports for youth with SED and their families, foster families, kinship families, or other licensed care;
5. Ensure families access to parent partners and other flexible non-traditional support services identified in a family-centered planning process; and
6. Improve the clinical and functional outcomes of children and youth with SED.

General Eligibility Requirements

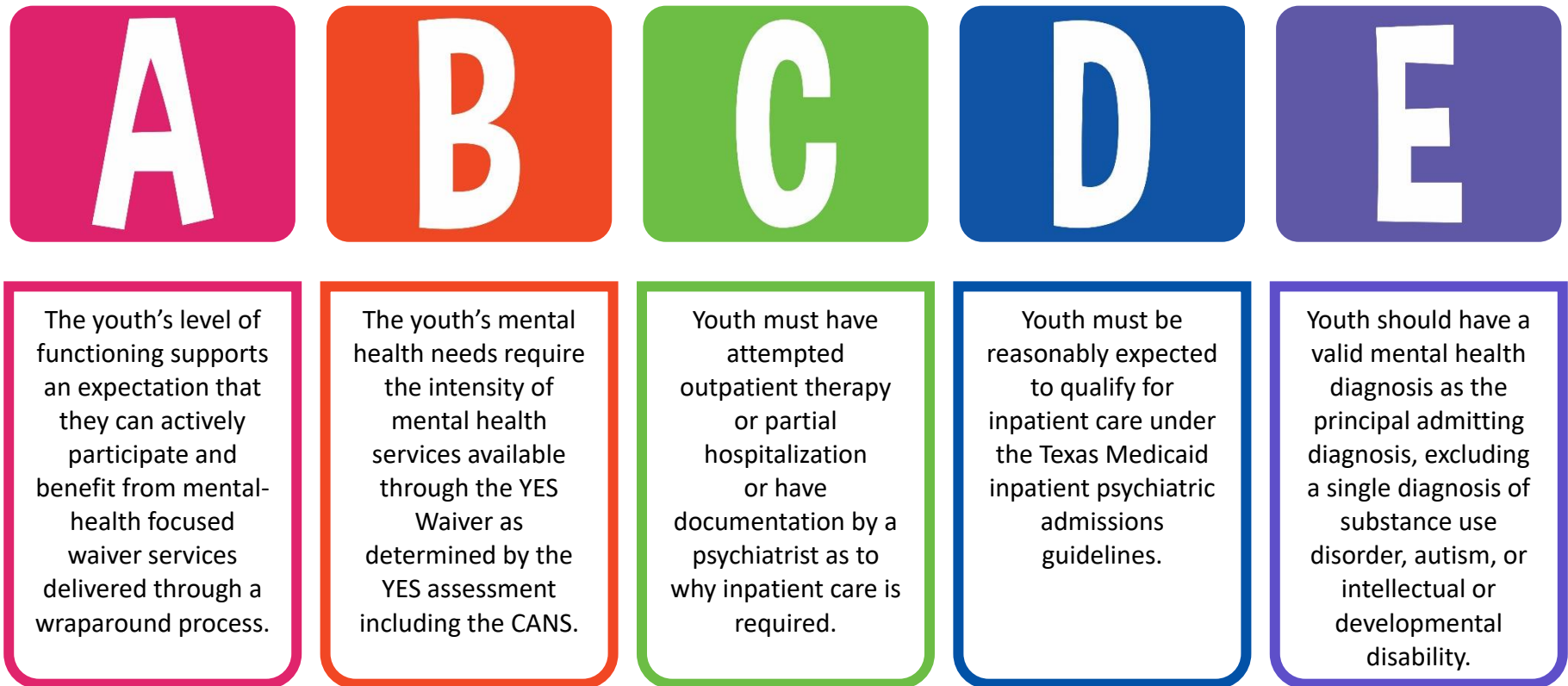
To participate in the YES Waiver program, a child or youth must:

1. Be ages 3 through 18;
2. Reside in:
 - A. **DFPS Managing Conservatorship:**
 - i. A non-institutional home-like setting with the youth's guardian, parent, and/or medical consentor; or
 - ii. Private residential treatment facility with a scheduled discharge date within next 30 days; or
 - B. **Legally Emancipated:** The youth's own home or apartment;
3. Be eligible to receive Medicaid under a Medicaid eligibility group included in the waiver; and
4. Not be a recipient of other 1915(c) or 1915(i) waiver programs.

Clinical Eligibility Criteria

Potential YES Waiver program participants undergo a Clinical Eligibility Assessment using the Child and Adolescent Needs and Strengths (CANS) tool to determine eligibility. Figure 1 describes the five clinical criteria.

Figure 1. YES Waiver Clinical Eligibility Criteria



3. YES Waiver Enrollment Protocol

Only the Child Protective Services (CPS) caseworker or medical consentor can request a child or youth to be added to the YES Waiver inquiry list and assessed for the YES Waiver program unless the youth is legally emancipated. Follow the steps below in Figure 2 to enroll a child or youth in the YES Waiver program.

Figure 2: YES Waiver Enrollment Steps

1

Request for Services

Contact the local mental or behavioral health authority (LMHA/LBHA) YES Waiver inquiry line associated with the child or youth's physical address to request YES Waiver program services.

Contact



To find the LMHA/LBHA:

- Review the [YES Waiver inquiry line list](#);
- Select the county in which the child or youth resides; and
- Call the appropriate inquiry line.

2

Intake and Evaluation

The LMHA/LBHA contacts the CPS caseworker within 24 hours or 1 business day of the inquiry to schedule the Child and Family Team (CFT) meeting intake. The child or youth and their medical consentor must attend the intake. The Department of Family and Protective Services (DFPS) strongly encourages the CPS caseworker to attend.

Assess



Within seven business days of completing a Demographic Eligibility Screening from information provided at the time of the request, the LMHA/LBHA conducts the Clinical Eligibility Assessment.

Eligibility Determination

HHSC uses the assessment information to determine eligibility. Ineligible children and youth (and their caregivers or caseworker, if the child or youth is in DFPS custody,) receive the Denial of Eligibility and Fair Hearing Request forms from the LMHA/LBHA, as well as referrals to other beneficial services.



3

Enroll



Enrollment

For eligible children and youth, the LMHA/LBHA completes the enrollment process and initiates services available to the participant for one year.

These services may follow the participant to any LMHA/LBHA in Texas in the event of relocation.



4

Meet



Meeting Preparation

Once the participant is enrolled, the LMHA/LBHA requests the YES Waiver enrollment form from the CPS caseworker to:

- Identify all parties invited to the initial CFT meeting, including important people to the child or youth and/or family, such as teachers, coaches, friends, and family, as well as providers; and
- Provide relevant family dynamics or other information that may affect the flow of the meeting, such as domestic violence, protective orders, etc.

Initial CFT Meeting

The LMHA/LBHA gives the enrollment form to the wraparound facilitator within seven business days of the request.

The wraparound facilitator coordinates the initial CFT meeting which must occur within 30 days. Required attendees include:

- Child or youth;
 - CPS caseworker;
 - Medical consentor;
 - Foster parent; and
 - Wraparound facilitator.
-

Ongoing Service Delivery

The average length of time in the YES Waiver program is 11 to 18 months; however, each child or youth's needs will determine the duration of care. Recommendations for continued YES Waiver services after the initial first year are determined at the CFT meetings.

The wraparound facilitator meets with the family on a regular basis, and the CFT meets monthly.

The child or youth and their parents or guardians are encouraged to participate in:

- Weekly meetings with the wraparound facilitator;
- Monthly CFT meetings;
- Weekly attendance of desired YES Waiver services;
- Emergency team meetings within 72 hours of crisis; and
- Every 90 days the CFT meet and review the child or youth's plan.

Questions?

For more information about the YES Waiver program, contact:

- DFPS State Office of Mental Health at SOMH@dfps.texas.gov; or
- HHSC YES Waiver program at YESWaiver@hhs.texas.gov.

Also visit the [HHSC YES Waiver program webpage](#).

List of Acronyms

Acronym	Full Name
CANS	Child and Adolescent Needs and Strengths
CFT	Child and Family Team
CPS	Child Protective Services
DFPS	Department of Family and Protective Services
HHSC	Health and Human Services Commission
LBHA	Local Behavioral Health Authority
LMHA	Local Mental Health Authority
SED	Serious Emotional Disturbance
YES	Youth Empowerment Services